

Tisza River Sub-basin: Protected Areas (National parks, Nature and Biosphere reserves and Ramsar sites) MAP 5

LEGEND

- Tisza River Sub-basin
- Danube River Basin District (DRBD)
- Tisza and Danube
- Tributaries (river basins larger than 1,000 km²)
- Lake water bodies (surface area > 10 km²)
- National borders

- Habitat and species protected areas
(< 10,000 ha, 10,000-50,000 ha, >50,000 ha)

- Transboundary co-operation

List of areas:

- 1: Carpathians Biosphere reserve
- 2: Synevyr
- 3: Uzhanskyi
- 4: Calimani
- 5: Gradistea Muncelului-Cioclovina
- 6: Muntii Apuseni
- 7: Retezat
- 8: Rodna
- 9: Maramures mountains natural park
- 10: Slovak karst NP with Domic (Ramsar)
- 11: Latorica landscape protected area and Ramsar
- 12: Slovak paradise NP
- 13: Muránska lanina NP
- 14: Hortobágyi NP and Ramsar
- 15: Kiskunsági NP
- 16: Aggteleki NP
- 17: Bükk NP
- 18: Körös-Maros NP
- 19: Ludasko Lake protected area and Ramsar
- 20: Slano Kopovo protected area and Ramsar
- 21: Stari Begej-Carska Bara protected area and Ramsar
- 22: Tisza river- Kosice (Ramsar)
- 23: Senné-fishponds (Ramsar)
- 24: Felső Tisza (Ramsar)
- 25: Pusztaszer (Ramsar)
- 26: Bodrogsziget (Ramsar)
- 27: Mártély (Ramsar)

- Cities 10,000-50,000 inhabitants
- Cities 50,000-100,000 inhabitants
- Cities 100,000-250,000 inhabitants
- Cities 250,000-1,000,000 inhabitants

This product includes Intellectual Property from European National Mapping and Cadastral Agencies and licensed on behalf of these by EuroGeographics

0 25 50 75 100 125 Kilometers



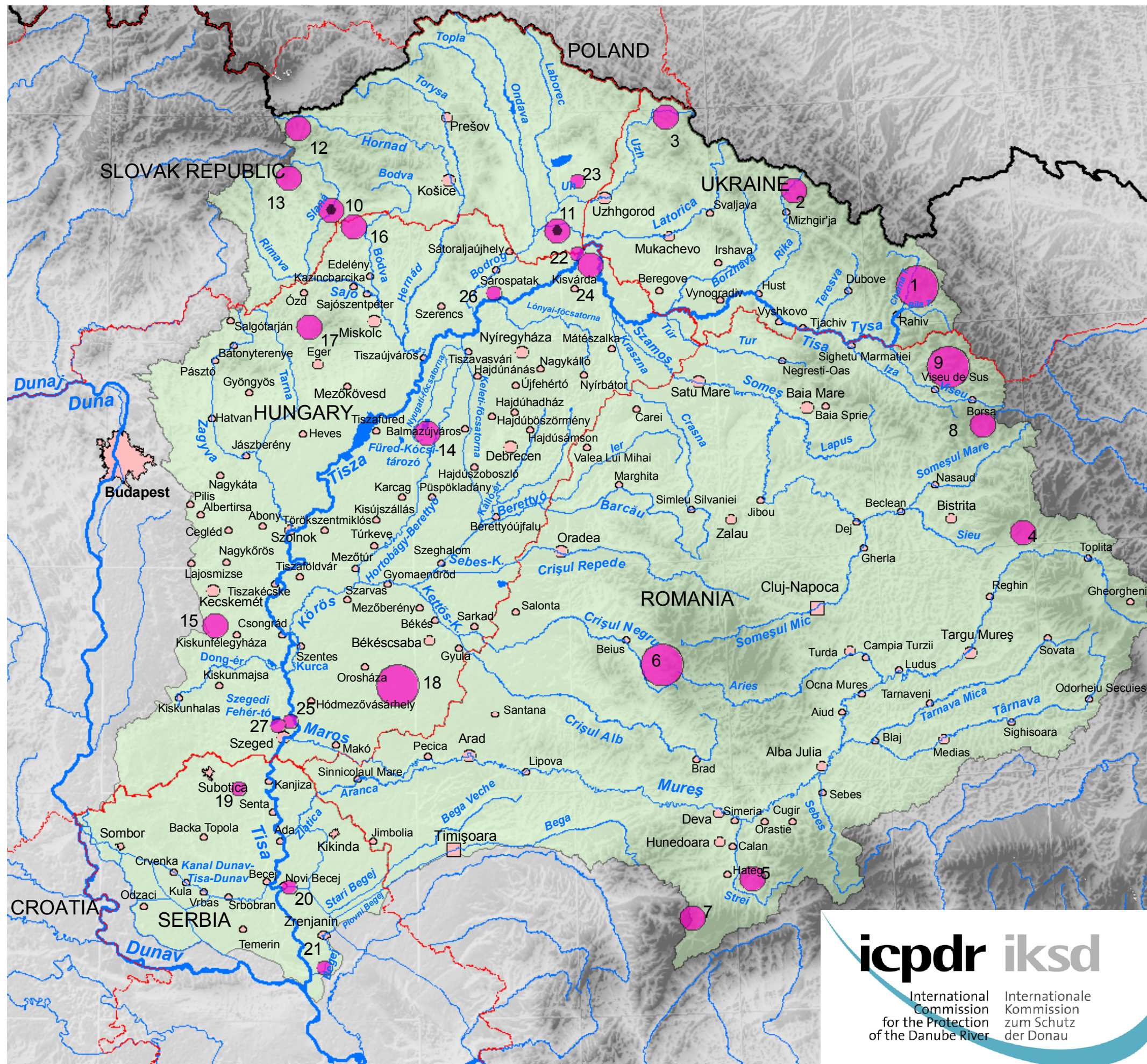
Scale: 1 : 2,000,000

(Scale 1: 3 mill in A4 landscape paper format)



Product of ICPDR, Vienna

Prepared by FLUVIUS, Vienna, February 2008



icpdr ikzd

International Commission for the Protection of the Danube River
Internationale Kommission zum Schutz der Donau