

Sub-Basin Level Flood Action Plan Tisza River Basin



//// Deutschland //// Österreich //// Česká republika //// Slovensko //// Magyarország //// Slovenija //// Hrvatska //// Bosna i Hercegovina //// Srbija //// Crna Gora //// România //// България //// Moldova ////

November, 2009

CONTENTS

1. INTRODUCTION.....	1
2. CHARACTERISATION OF CURRENT SITUATION	2
2.1. Review and assessment of current situation.....	2
2.1.1. Natural conditions.....	2
2.1.2. Floodplains and flood defences	12
2.1.3. Characterisation of land uses and known risks.....	14
2.1.4. Conditions of flood forecasting and warning	16
2.1.5. Recent awareness of flooding.....	17
2.2. Review and assessment of the predictable long term developments	19
3. TARGET SETTINGS.....	22
3.1. Regulation of land use and spatial planning	24
3.1.1. Targets set by Ukraine	24
3.1.2. Targets set by Romania.....	25
3.1.3. Targets set by Slovakia	25
3.1.4. Targets set by Hungary	25
3.1.5. Targets set by Serbia.....	25
3.2. Reactivation of former, or creation of new, retention capacities.....	25
3.2.1. Targets set by Ukraine	25
3.2.2. Targets set by Romania.....	25
3.2.3. Targets set by Slovakia	25
3.2.4. Targets set by Hungary	26
3.2.5. Targets set by Serbia.....	26
3.3. Structural flood defences	26
3.3.1. Targets set by Ukraine	26
3.3.2. Targets set by Romania.....	26
3.3.3. Targets set by Slovakia	26
3.3.4. Targets set by Hungary	27
3.3.5. Targets set by Serbia.....	27
3.4. Non-structural measures (preventive actions, capacity building of professionals, raising awareness and preparedness of general public)	27
3.4.1. Targets set by Ukraine	27
3.4.2. Targets set by Romania.....	28
3.4.3. Targets set by Slovakia	29
3.4.4. Targets set by Hungary	29
3.4.5. Targets set by Serbia.....	29

3.5. Prevention and Mitigation of Water Pollution Due to Floods.....	30
3.5.1. Targets set by Ukraine	30
3.5.2. Targets set by Romania.....	30
4. MEASURES TO ACHIEVE TARGETS	31
4.1. Regulation on land use and spatial planning	31
4.2. Reactivation of former, or creation of new, retention and detention capacities.....	33
4.3. Structural flood defences	35
4.4. Non-structural measures.....	41
ANNEX 1 - ABBREVIATIONS	48

1. INTRODUCTION

In response to the danger of flooding and in line with its Joint Action Programme, the ICPDR decided in 2000 to establish the long-term Action Programme for Sustainable Flood Prevention in the Danube River Basin. The whole process was accelerated after disastrous floods in 2002 and resulted in adoption of the Action Programme at the ICPDR Ministerial Meeting on 13 December 2004.

The overall goal of the ICPDR Action Programme is to achieve a long term and sustainable approach for managing the risks of floods to protect human life and property, while encouraging conservation and improvement of water related ecosystems. Given the area, the complexity and the internal differences in the Danube River Basin, the Action Programme represents an overall framework, which needs to be specified in further detail for sub-basins. Therefore, the targets of the ICPDR Action Programme include preparation of flood action plans for all sub-basins in the Danube catchment area.

In September 2007 a Directive of the European parliament and of the Council on the assessment and management of flood risks (EFD) was adopted by the European Council. The aim of the Directive is to reduce and manage the risks that floods pose to human health, the environment, cultural heritage and economic activity. The Directive requires Member States to first carry out a preliminary flood risk assessment by 2011 to identify areas at risk of flooding. For such areas they would then need to draw up flood risk maps by 2013 and establish flood risk management plans focused on prevention, protection and preparedness by 2015.

As the ICPDR Action Programme was designed in full coherence with EFD the flood action plans for sub-basins are an important part of implementation of the EFD and they summarize the key actions towards preparation of the flood risk management plans. Therefore, the preparation of the flood action plans for sub-basins can be considered as an interim step in implementation of EFD.

This action plan for the Tisza sub-basin reviews the current situation in flood protection and sets the targets and the respective measures aiming among others to reduction of damage risks and flood levels, increasing the awareness of flooding and to improvement of flood forecasting. The targets and measures are based on the regulation of land use and spatial planning, increase of retention and detention capacities, technical flood defences, preventive actions, capacity building, awareness & preparedness raising and prevention and mitigation of water pollution due to floods.

It is foreseen that this planning document will be further refined as appropriate and necessary by the bilateral river commissions.

2. CHARACTERISATION OF CURRENT SITUATION

2.1. Review and assessment of current situation

2.1.1. Natural conditions

The Tisa River Basin is the largest sub-basin in the Danube River Basin, covering 157,186 km² (19.5%) of the Danube Basin. Together with its tributaries, the Tisa River drains the largest catchment area in the Carpathian Mountains before flowing through the Great Hungarian Plain and joining the Danube River.



1. Figure Orography and river network of the Tisza Basin

Ukrainian part of Tisza river basin is located within one administrative unit – Zakarpatska Oblast or Zakarpattia (in the report, the term “Zakarpattia” is used.). It is a unique case for Ukraine when administrative and hydrographical borders match, which creates favorable conditions for river basin management including flood management.

The area of Zakarpattia is cut with a dense network of water courses. The average river network density is 1.7 km/ km², which is a very high value for any region, and results from the steepness of the mountains, and the impermeability of the underlying bedrock. This contributes to high runoff (surface water flow) rates. In the flatter parts of the region, the land is so flat that dense networks of drainage ditches are needed to drain shallow water from fields to enable crops to grow. There are 9 426 rivers and streams with a total length of 19 793

km in Zakarpattia. Of these, 153 rivers have an overall length of 3 555 km, and four of them – Tisza, Borzhava, Latorica and Uzh - are each over 100 km long.



2. Figure Ukrainian part of Tisza sub-basin (taken from *Tisza basin Analysis, ICPDR, 2007*)

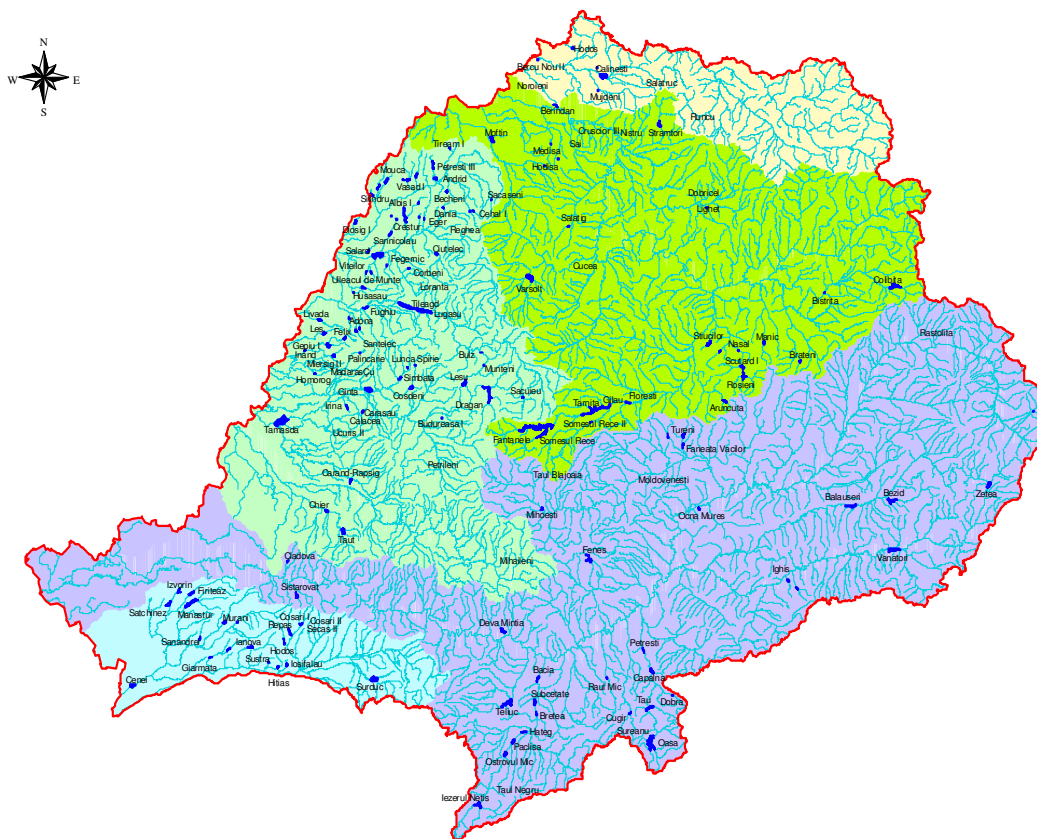
The northern and western parts of **Romania** belong to the Tisza River Basin. Its catchment area on Romanian territory is 70 263 km² including Tisza and its tributaries Viseu, Iza, Tur, Somes, Crasna, Crisul Alb, Crisul Negru, Crisul Repede, Mures, Aranca, Bega and Bega Veche River Basin.

Upper Tisza forms a natural border with Ukraine with a length of 62.5 km, between Valea Visoului and Teceul Mic localities.

The left side tributaries of the Tisza River are: the Viseu, the Iza, the Tur, the Somes and the Crasna Rivers on the Romanian territory. The Tur, Somes, Crasna, Crisuri and Mures Rivers join the Tisza on the Hungarian territory. The Tisza River Basin includes 11 counties: Cluj, Salaj, Maramures, Satu-Mare, Bihor, Arad, Timis, Hunedoara, Alba, Mures, Bistrita-Nasaud.

The **Slovak** part of the Tisa River Basin consists of these main river sub-basins:

- The northern part of the Bodrog River Basin, in which is the Bodrog River formed by the confluence of the Ondava and the Latorica rivers. The Bodrog River crosses the Slovak-Hungarian border near the village Streda nad Bodrogom in Slovakia and the village Felsőberecki in Hungary,
- The northern part of the international Slaná River basin,
- The northern part of the international Bodva River basin,
- The northern part of the international Hornád River basin.



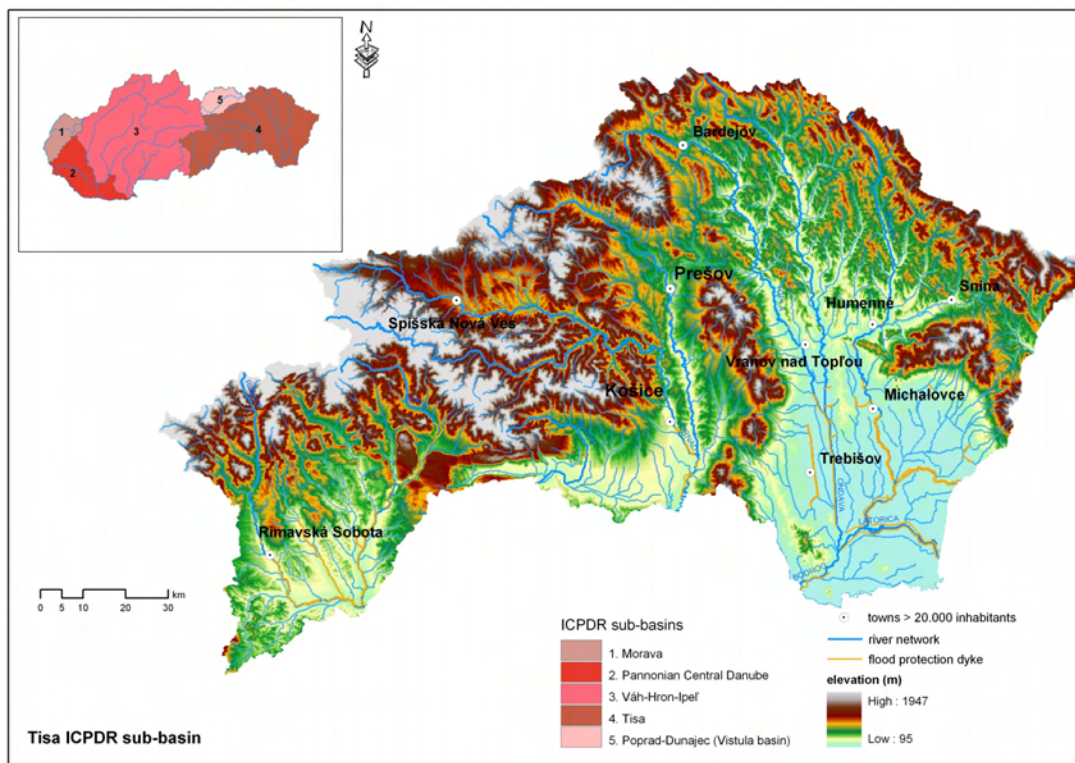
3. Figure Romanian part of the Tisza Basin

The southern parts of these river basins are situated in the **Hungary**. Large watercourses, as well as numerous smaller watercourses are under administration of the Slovak Water Management Enterprise, state enterprise (important watercourses). The other watercourses are administered by the municipalities, forestry, agriculture, army, etc.

The Bodrog River itself is the typical lowland river. Its steep river banks are eroded by the water and also the sedimentation occurs in several stretches. The discharge capacity of the river channel is still opened and disputable, because it is related to the outflow conditions in the whole river basin and also to the measures, which have been or will be realized in the Hungary. In the basins of small rivers and creeks there is an unfavourable situation. The discharge capacity of these watercourses is insufficient in the upper and also upland parts of the Bodrog River basin, where drainage regulations have been realized. There are an almost irreparable damages in the watercourses caused by the self-initiated regulations of several villages, because they never had the adequate discharge capacity and also their realization quality is miserably low.

The increased frequency of floods caused by intensive precipitation during the 70's was the reason for the river trainings of the watercourses in the Slaná River Basin. The river training was realized in the stretches of the Slaná River and its tributaries - the Štítník, Muráň, Turiec, Rimava, Gortva and Blh Rivers as well. The river trainings were based mainly on the complex

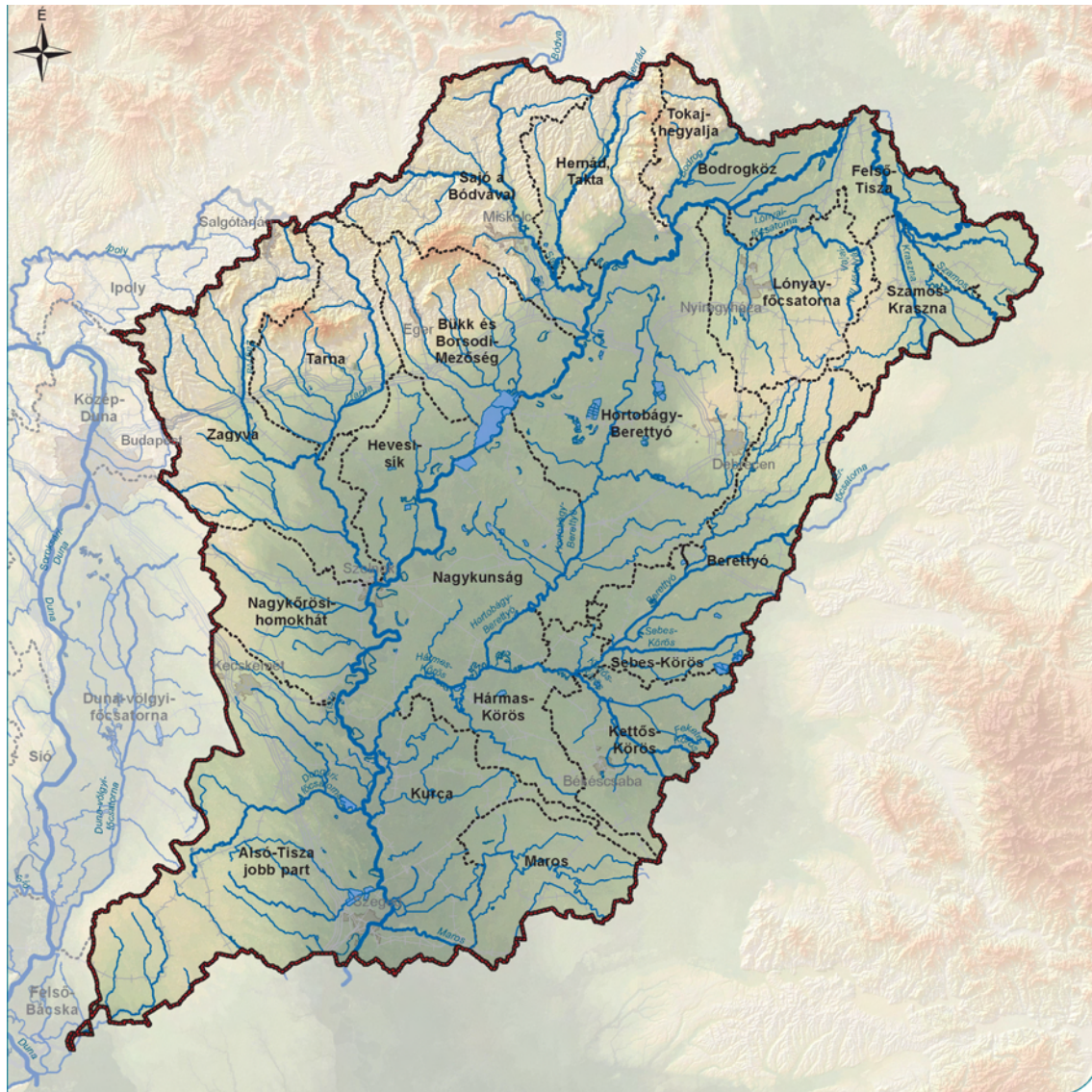
river channel regulation and construction of the dykes on both banks either. They protected the towns and villages and also the agricultural land in the valley of the Slaná River. The flood protection permitted the urban development of the settlements and the construction of important transport corridors.



4. Figure Topography of the Slovak part of the Tisa River Basin

The hazardous floods occurred mainly in the lowland areas in the Bodva River basin in the past. That was reason why the most of the river training activities were concentrated in the endangered areas. The large-scale river training has been realised in frame of the water management regulations of the lowland Moldavská nížina. The aim of these regulations was to protect the agricultural land against the flooding. They were realised from 1960 to 1964. The flood protection of the towns and villages was realised in the same time. The Bodva and Ida river channels have been regulated and the dykes on the banks were constructed in their lowland stretches.

The area of the Hungarian Tisza Basin is 46 380 km² with 390 water courses, canals, lakes, oxbow lakes, ground water bodies etc. The larger part of this sub-basin is flat land (Great Hungarian Plain = Alföld) delimited by the Northern Massifs. The highest point and the lowest of this basin (and Hungary as well) is 1 041 m A.s.l. (Kékes) and 75.8 m A.s.l. (Szeged-Gyálarét) respectively.



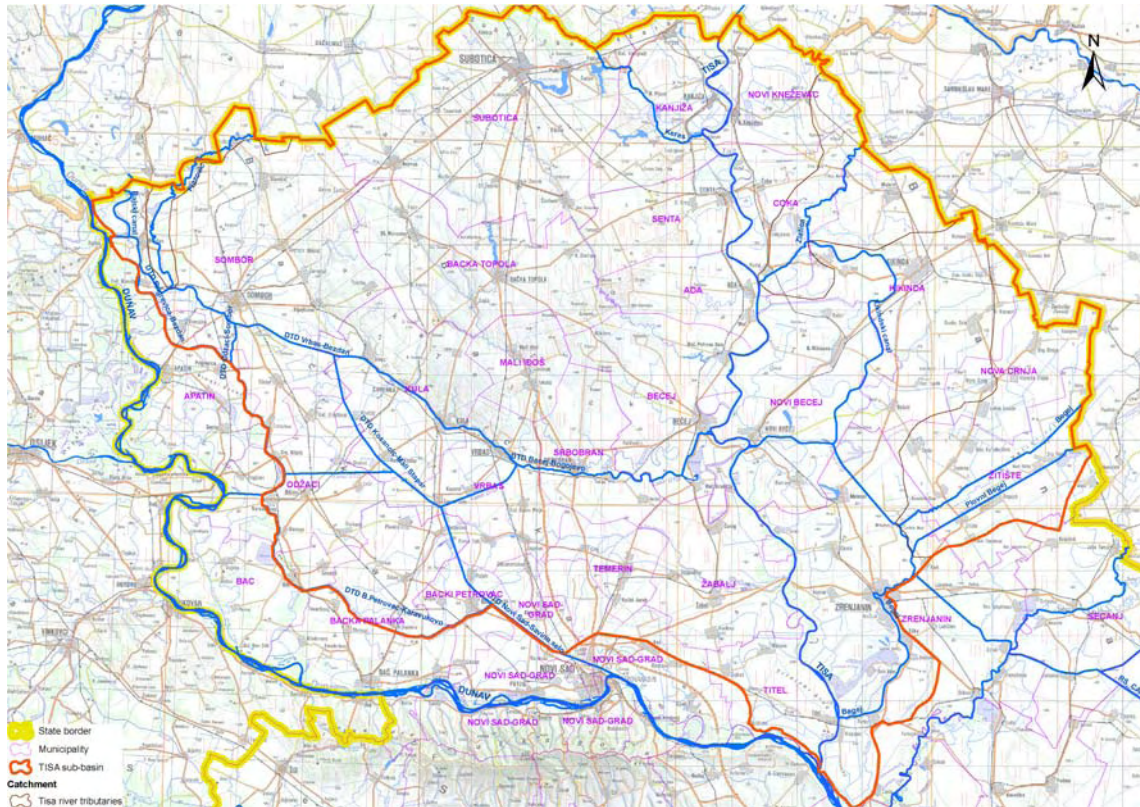
5. Figure The Hungarian Tisza Basin

Only 5% of the Tisa River catchment area belongs to Serbia. The course of the Tisa River in Serbia is 164 km long and divides the province of Vojvodina into two regions: the Bačka on the west and the Banat region on the east.

The major left tributary is the Begej River, with a mouth 10 km upstream of the Danube and Tisa confluence. The Begej River originates from the Old Begej and the Begej Channel, both coming to RS from RO.

In **Serbia** high waters on the Tisa River appear mostly at the end of winter and in spring, after the snowmelt, but also in summer after heavy rainfalls.

The river network and administrative units of the Serbian Tisa River Basin are given in Figure 6. Figure.



6. Figure River network and administrative units on the Serbian part of the Tisa River Basin

2.1.1.1. Topography

Zakarpattia is predominantly mountainous, with some 80% of the 12 000 km² area described as either a mountain region, or a sub-mountain region. The mountains rise to some 2 060 m, dropping to elevations of around 110 m along the main Tisza valley. The mountain slopes are mostly steep, and are naturally forested. Rivers flow in deep valleys, and often have very limited floodplain, and so in the upland areas most roads and habitations have to be very close to the rivers. The total area of floodplain is around 1,900 km², with around 600 km² alongside the Tisza. Where dikes are constructed the area between the dikes is the floodplain.

The Tisza River Basin in **Romania** is characterised by a variety of relief forms, from mountains to plains. The main weight is held by hills and plateaus occupying the central zone of the river basin and comprising much more individualised unities. The width of river floodplains is from some tens of meters to some kilometres.

The topography map of the **Slovak** part of the Tisa River Basin is shown on Figure 4. Figure.

The territory of **Hungary** is split by the Zagreb-Hernád line into two main tectonic units. North of this line part of the African plate and South of it Eurasian plate can be found. About 25 million years ago the African plate has moved into the northern part of the Carpathian Basin (during the Oligocene) resulting in volcanic eruptions and creating the Mátra and

Zemplén Hills. The thickness of the crust is lower than the average in Hungary (26-27 km instead of 33 km) resulting in higher geothermal gradient.

The oldest rocks (900-1 100 million years) can be found on the Alföld. During the Trias the territory of Hungary was under sea creating huge limestone and dolomite deposits (northern part). The slowly subsiding basin was inundated by the Pannonian Sea that covered the region by thousands of meter thick sand and clay layers. With the aggradation of the Pannonian Sea a freshwater swampy lake remained forming lignite, crude oil and natural gas deposits. During the ice age the cold wind storms, exploring the opportunity of lacking vegetation, carried a lot of dust from the river beds that turned into loess layers. Later the river filled up their floodplains resulting in perfect flat regions. Also dune regions were formed in Kiskunság and Nyírség.

The hydrographic structure of the Tisza Basin is shown on Figure 7. Figure

2.1.1.2. Hydrology

The Upper Tisza river basin has a long history of flooding as a result of intense rainfall episodes. The highest level of rainfall occurs in June and the lowest in January and February. However, the melting of the thick snow cover in spring raises the general level of the rivers and if this combines with high rainfall, a flood wave can (and often does) develop. Within 6 - 10 hours, the water from such an event reaches the Ukraine-Romanian border and within 12 - 36 hours it reaches the Ukraine-Hungarian border, with a possible water level rise of 8-10 m.

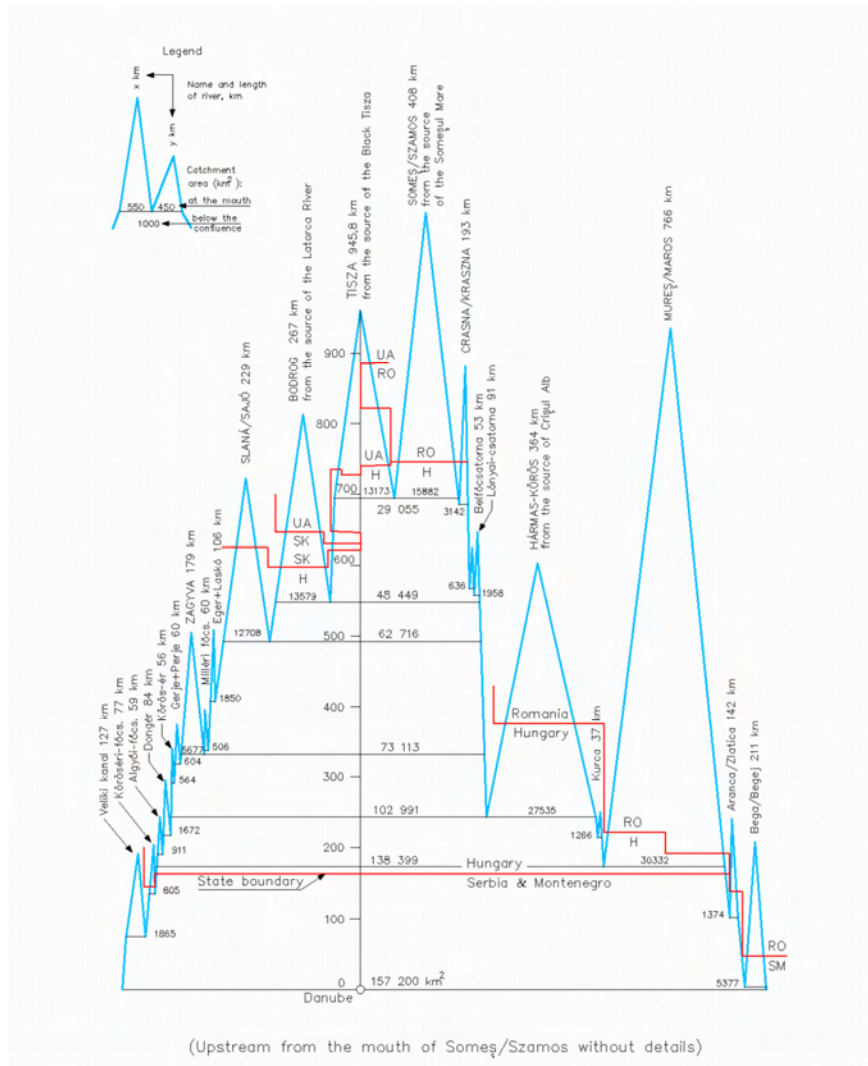
The Tisa River Basin is influenced by the Atlantic, Mediterranean and Continental climates, which impact regional precipitation. About 60% of the Upper Tisza River Basin gets more than 1000 mm of precipitation annually. Warm air masses from the Mediterranean Sea and the Atlantic Ocean cause cyclones with heavy rainfall on the southern and western slopes.

The multi-annual mean values of annual precipitation vary within the Tisza River Basin from 500 to 1600 mm/yr (See Figure 8. Figure). The highest values (around 1,600 mm/yr) occur in the northwestern Carpathians and in the Apuseni Mountains.

The highest maximum depth of snow, measured in various mountains of the Tisa River Basin are above 100 cm, with water equivalents of 250-300 mm. Lower maximum values (40-60 cm with water equivalents of 100-200 mm) were registered in the lowland parts of the basin.

In the mountainous regions, flash floods are common in the spring and summer. These are further intensified by the low infiltration capacity of the soils in the Carpathian Mountains. These floods cause enormous inundation in the lowland areas.

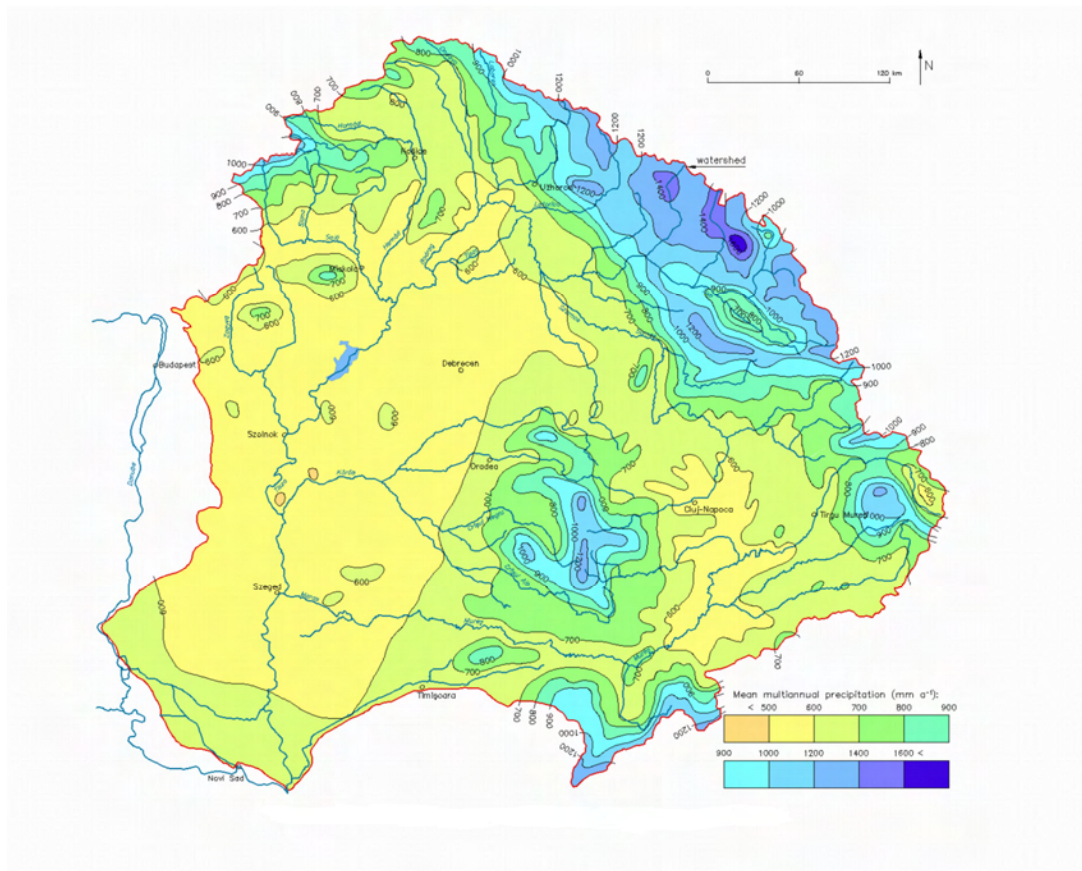
Rainfall in the Carpathian Mountains can be substantial and sudden. Extensive runoff, floodplain deforestation and river canalization reduce the ability of the catchment to attenuate the flood wave. When heavy rains occur, flooding threatens human lives as water levels rise quickly without sufficient retention capacity.



7. Figure Hydrographic structure of the Tisa River Basin in Serbia

In Hungary the yearly precipitation is 500-700 mm along the Central Tisza and in the Northern Massifs respectively. There are two peaks in the precipitation: the first is in April-June and the second is in October.

The type of a particular flood wave depends also on the magnitude of the sub-catchment where it originates. Weather situations lasting for days and bringing repeated rains perhaps for weeks are liable to cause a flood wave on the middle and lower Tisza reaches. Atmospheric phenomena lasting often for 12-24 hours only, but involving heavy rainfall over smaller catchments, like that of the Upper Tisza, the Bodrog and Körös rivers, may trigger floods. Flash floods often of considerable magnitude may rush down the small streams (Zagyva, Tarna, etc.) and creeks in the wake of violent local storms of a few hours duration.



8. Figure Isohyetes of multi annual mean precipitation in Tisza River Basin

The Hungarian section of the River Tisza can be subdivided according to the flow regime into three reaches, viz. the Upper-, the Middle- and the Lower Tisza. Three major flood waves occur normally on the Upper-Tisza above the confluence with the River Szamos. The first in spring carries mostly snowmelt water, while those in May and in autumn are caused by rain runoff. However, downstream of the Szamos mouth the second is liable to overtake the first wave and intricate flood situations of often very long duration on the Middle- and Lower Tisza depend on the flood waves discharged to the recipient by the major tributaries, like the Bodrog, Körös and Maros rivers.

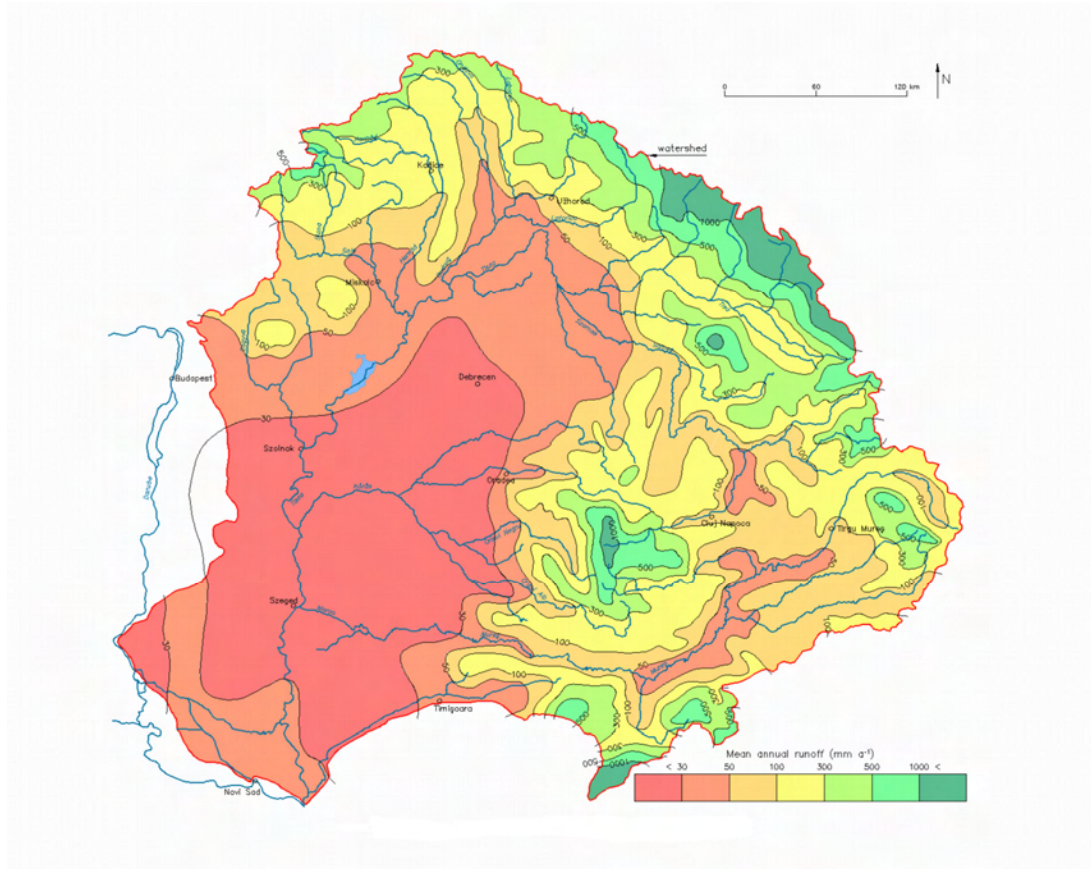
Most Tisza tributaries, like the Szamos, the Bodrog and the Körös rivers follow flood regimes similar to that of the recipient. Exceptions are the Sajó and the Maros, which take their course on huge alluvial fans.

The distribution of flows over the year reveals also a typical pattern, in that most rivers carry low flows from late summer to the next spring. A statistical analysis by rivers and regions has shown that in the Hungarian part of the Tisza catchment minor to medium floods are likely to occur every second or third year, major floods every fifth to sixth year, while abnormal floods must be anticipated at 10-12 year intervals of time.

The regime of the tributaries is a flashy one, in that the flood waves triggered by rapid snowmelt or a major storm arrive within 1-2 days on the Hungarian sections, raising the water

level by several meters within a brief period of time, on some rivers within a few hours only. The Upper Tisza and her tributaries, further the Körös rivers pose an especially high risk in this respect, where 28-36 hours after a rainfall the water level may rise by as much as 8-10 m in the entrance boundary cross section.

Figure 9. Figure shows the mean annual runoff on the Tisza Basin.



9. Figure Mean annual runoff of the Tisza Basin

2.1.1.3. Ice conditions

Ice jamming is major threat to flooding. Due to the climatic conditions break-up ice jamming are frequent in the Tisza Basin. Recently Slovakia reported flooding due to ice jamming on the Bodrog and the Slana Rivers.

Ice appears on the Hungarian Tisza pretty often. Frequently ice jams are formed and the surface is covered by standing ice. Springtime the snowmelt raises the water level and breaks up the ice. Very often break-up ice jams are formed. With help of the ice breaker fleet on Tisza these ice jams can be cleared and the danger of icy floods can be eliminated.

2.1.2. Floodplains and flood defences

At the territory of **Zakarpattia**, the oldest technical flood defense structures are built at the beginning of XVIII century. There are 824 km of dykes, including 690 km along the main rivers and 134 km – at small rivers and ameliorative channels. River training works are conducted on the area of 82 km. The flood defense system includes water outlet channels of total length 1344 km, where 1107 hydro-technical structures are located. The total length of bank enforcement and riverbed training constructions (embankment walls, gabions etc.) is 274 km. As design criteria 0.5% exceedence probability of the design water level for the structures of “class I” that protect more than 100 000 ha of agricultural lands is used. For the structures of “class IV” that protect the recreational and sanitary area it goes up as high as 10%.

In order to protect goods and human lives, on **Romanian** territory have been realised hydraulic structures which compose the National System for Flood Defence. The main hydraulic works affecting the flow regime of the rivers are: reservoirs, deviations and water transfers from neighbouring basin into a reservoir and levees. These types of infrastructures are in fact the most useful instruments for water management, offering possibilities in getting regulation of different volumes during the seasons and sometimes during the year, to offer flood protection or dilution in case of accidental pollution.

In *Someş-Tisa Basin* there are 87 reservoirs with various purposes (water supply, energetic, flood protection, fishery and irrigation); 9 derivations of total length of 169.4 km and with an installed discharge of 47.3 m³/s; there also exist 514 river bed regulations of 1005 km length and 136 dykes of 1087 km length total. These works offer protection against floods to: 16 towns, 74 industrial units, 31,000 homes or residences, 144000 ha surface, roads, bridges, railways, etc. The majority of these works are mainly protecting localities, rather than extra-villain terrain. Among the protected localities there are: Cluj–Napoca, Baia Mare, Bistrița, Zalău, Dej, Beclean, Năsăud and Jibou.

In the *Crişuri Basin* there are 46 reservoirs with the main purpose of flood protection. There are 5 derivations in total length of 249.1 km and with an installed discharge of 347.5 m³/s too. The 378 regulations of river beds with a total length of 700 km and 218 dikes of total length of 1162 km protect against floods: 29 towns, 138 industrial units, 59,000 houses and residences, a surface of 264,000 ha, roads, bridges, railways and other objects.

In the *Mureş Basin* there are 127 reservoirs with a total volume of 685 mn.m³ and 7 derivations of total length of 264.0 km and with an installed discharge of 21.2 m³/s. From those 26 reservoirs with a volume over 1 mn.m³, 17 are permanent and 9 are polders. There are also 583 regulations of river beds of a total length of 816 km and 210 dikes of a total length of 827 km. These works protect against floods: 55 towns, 381 industrial units, 69,000 houses, 194,000 ha, roads, bridges, railways, roads and other objects.

In **Slovakia** a detailed survey of watercourses in towns and villages from the viewpoint of the flood protection has been carried out by the Slovak Water Management Enterprise, in the period from 1999, April to 2002, March. The results of the survey are updated according to the floods occurrence in the individual river sub-basins annually. The results of evaluation are summarized in the Table below.

1. Table Review of the evaluated watercourses stretches in the towns and villages

Sub-basin	Stretches which fit criteria		Endangered stretches		
	Number	Length [km]	Number	Length [km]	Number of directly affected inhabitants
Bodrog	117	80.55	712	640.15	30 000
Slaná	80	48.59	472	452.37	7 000
Bodva	11	9.50	45	48.40	780
Hornád	24	31.87	313	275.10	70 300

The figures suggest that only 12% of the river length is protected properly in these river basins.

Approximately one-half of the territory of **Hungary** is situated in the Tisza Basin, the present level of development in which has been attained by close to two centuries of planned water management efforts. In the early years of the 19th century, parts of the 20 000 km² large flood plain (20% of the Hungarian plains) had been inundated permanently, or for periods of different length of the year. *Flood control development* in the Tisza Valley was introduced by training isolated sections of some of the tributaries and throwing up embankments along them. An ambitious comprehensive project was launched later in 1846. The embankments of 4 500 km total length built over close to 150 years (according to the data of 1980) offer flood safety to an area of 27 000 km² in size. (The present shares of Hungary are 2 900 km of embankment and 18 000 km² protected area).

2. Table The river network in the Hungarian Tisza Valley and the flood plains inundated by the 1 % flood

River	Tisza Valley			Hungary			% of Tisza Valley		
	Length	Flood plains	Flood bed	Length	Flood plains	Flood bed	Length	Flood plains	Flood bed
	km	km ²	10 ³ ha	km	km ²	10 ³ ha	%		
	1 450	16 500	100.3	2 800	22 500	151.8	51.8	73.3	66.1
Small streams, major creeks	380	390	-	1 820	1 600	-	20.9	24.4	
Total	1 830	16 890	100.3	4 620	24 100	151.8	39.6	70.1	66.1
Flood levees	2 700			3 900			69.2		
Summer dikes	208		29.0	354		38.5	58.8		75.3

Flood control has been extended to 97% of the flood plains along the Hungarian section of the Tisza. These flood plains are subdivided into 149 flood basins. The ratio of the flood basins in the *Danube and the Tisza catchments* is approximately 1:3, demonstrating clearly the importance of flood control in the latter. Particularities of the flood basins in the Tisza Valley are represented by 96 flood basins with an area of 15 286 km², the total population is 1 448 702, the number of communities is 418, of which 60 are towns. These rely for their flood safety on embankments (levees) of a 2 935 km length in total.

Under the provisions currently in force in Hungary, the defences must be dimensioned to withstand safely the “one in hundred years” (“one in thousand” along major towns) ice-free

flood, at a safety freeboard of 1.0-1.5 m. Considerations of safety, traffic and transportation on the crest in emergency situations, further of maintenance with mechanical equipment are involved in deciding on the minimal cross sectional dimensions. The resulting embankments rise locally more than 5-6 m above the surrounding terrain.

Since 1966 emergency reservoirs were flooded on along the Körös, the Berettyó, the Bodrog, the Zagyva Rivers and their tributaries.

2.1.3. Characterisation of land uses and known risks

The higher parts of the Tisza Basin are covered with forest. The lower parts and floodplains are used for intensive agriculture, except where larger wetlands and traditional grazing areas exist.

An important feature of any river basin is the areal distribution of permeability of its surface, shaping both the drainage network and the runoff regime (Figure 10. Figure). As for the Tisza River Basin, a great part of its surface – about 70%, including the Great Hungarian Plain and the Transylvanian Basin – is permeable. Semi-permeable areas are situated mostly in the Cserhát and Bükk Mountains and the sandy-gravelly sediments in the basins of the Rivers Someş/Szamos and Mureş/Maros. Impermeable are the crystalline and metamorph rocks in the Slovak Ore Mountains and in the N- and NE-Carpathians.

As for the vegetation cover, from the hydrological point of view, first of all the extent and distribution of forests is important. In the Tisza River Basin, the average share of forest cover is 26%. It is concentrated in the northern and eastern part of the basin, while there is only sporadic forest cover both in the Great Hungarian Plain and in the Transylvanian Basin, as shown in Figure 11. Figure

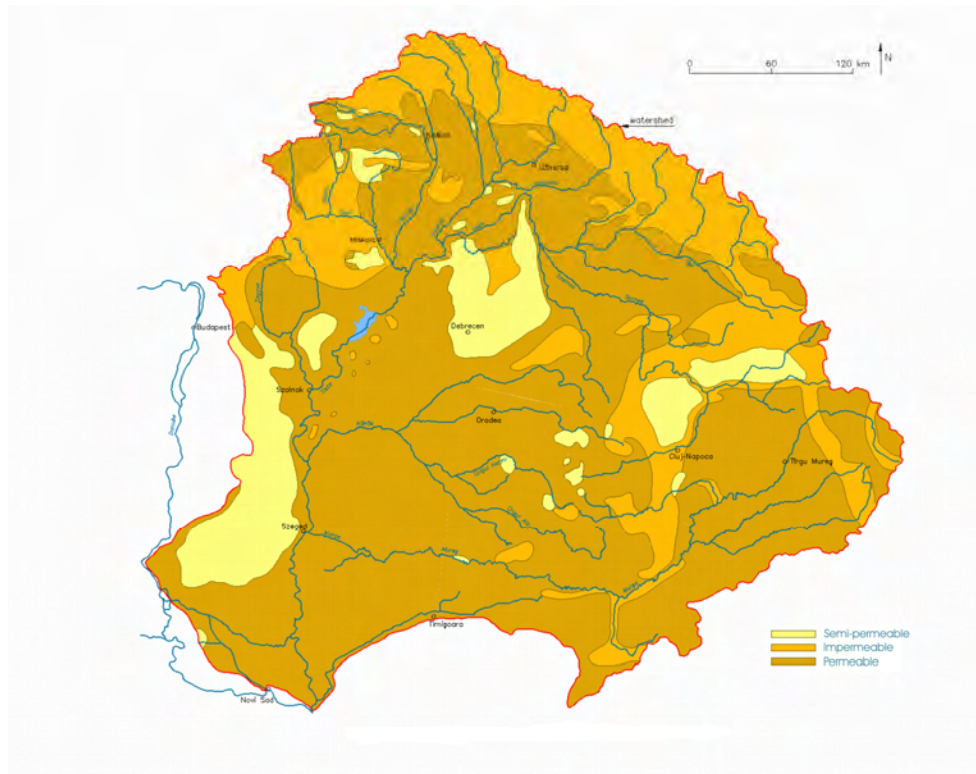
The urban environment and related issues are gaining importance in the Tisza River Basin. Rapid urbanization within the region is putting additional pressure on the surrounding rural and natural environment, including biodiversity and traditional landscapes.

As the limited supply of productive land in Zakarpattia largely restricts dwelling areas, communications and economic development to the river valleys, catastrophic floods have a major impact on life and livelihoods there.

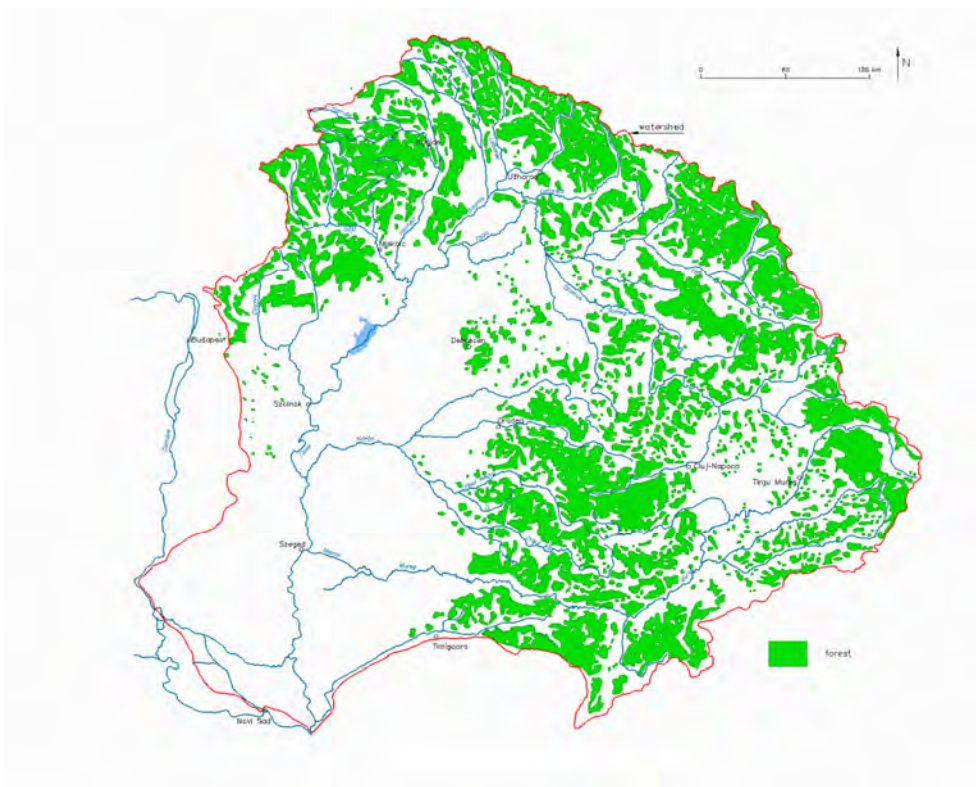
The level of flood exposure in terms of the ratio of flood plains is the highest in Hungary of all European countries and is comparable with the situation in the Netherlands alone.

Facts and figures on the reclaimed flood plains:

- 2.5 million people in close to 700 communities are exposed to flood hazard,
- One-third of the arable lands in Hungary, 18 000 km² valuable farmland are here,
- The flood plains contain 32% of the railway lines and 15% of the roads,
- Over 2000 industries have settled, and
- About 25% of the gross domestic product is produced here



10. Figure Permeability of the surface of the Tisza River Basin



11. Figure Forest cover of the Tisza River Basin

The high level of flood exposure in the Hungarian part of the Tisza Basin is illustrated strikingly by the fact that 74% of the 21 251 km² large total flood plain area are situated in this region. This area amounts to 16% of the total territory of Hungary and is protected by main-line levees of 2 901 km aggregate length, or 70% of the levees in Hungary. The Tisza Valley flood control development is among the largest by European and global scales alike.

2.1.4. Conditions of flood forecasting and warning

In all five countries of the Tisza Basin monitoring and analysis of hydrological variables, maintenance of a hydrological database and flood forecasting and warning is the responsibility of the state. The actual institutional setup is different but the common aim is to collect as much real-time information about the hydrological state as possible and use it for (real-time) flood forecasting.

The **Ukrainian** project AIMS TISZA II foresees 40 automatic hydrometric stations on the Tisza River and its tributaries. The data are forwarded to Nyíregyháza, Hungary in the frame of a Ukrainian-Hungarian co-operation. As a good example of the international co-operation in the basin meteorological radar data are transferred from Hungary, Romania and Slovakia to Ukraine. The three radar stations cover almost all Zakarpattia helping the prevision of heavy rainfalls.

In **Romania** during the last years three projects have been and being developed: SIMIN (National Meteorological Integrated System), DESWAT (Destructive Water) and WATMAN (Water Management).

SIMIN integrates the provided data from existent systems in Romania with a high technology in meteorological radars field, stations with surface hydrologic sensors, data processing systems and forecast decision based on satellite transmission. System was released in September 2003.

The DESWAT project has in its first stage as objective, the modernisation of informational hydrological system, beginning with data acquisition through 600 automatic stations placed on Rivers, 250 automatic gauging stations and 64 automatic quality stations, continuing with transmission support which will comprise the actual classic radio system, the GSM and satellite systems.

The programme package for hydrological forecast will be modernised, enlarged and will include semi-automatic procedures for elaboration of warnings, forecasts and information products for various decision makers, media and population.

WATMAN is a project through that the National Strategy for water management in case of disaster will be applied. It will integrate the output data from SIMIN and DESWAT, finally being carrying-out the Information-Decisional Integrated System. Those two projects, through modernised hydrologic and meteorological information systems will provide data and forecast in real-time, which represents input data for WATMAN infrastructure, optimising the integrated water management system.

17 synoptic stations are operated in the **Hungarian** part of the Tisza drainage basin, beside standard 3-hourly observations; 1-hourly observations are also reported. There are 31 reporting „climate” stations sending 12-hourly or daily reports, 56 hydro-meteorological stations operated by district water authorities may add the above set of information in the period of floods.

Two meteorological radars cover the Tisza Basin Budapest and Nyíregyháza-Napkor supplementing land based precipitation measurements. Around 30 telemetry rain gauges are in operation at the end of 2001 enabling calibration of radar measurements.

There are 87 reporting water level gauges on the Hungarian section of Tisza and tributaries. The usual pattern of observation follows daily twice observations but only daily reporting. Over 40 gauges report more frequently to regional centres as equipped with recording and telemetry equipment. All the station report more frequently during flood alert: 2-hourly or 1-hourly. During flood periods special gauge readings are also reported, the number of special flood gauges totals 240.

The National Meteorological Service generates meteorological warnings. These warnings reach Regional Environmental and Water Directorates (KÖVIZIGs) by means of VIR via the Central Water and Environmental Directorate (VKKI) Preparedness Unit or the National Hydrological Forecasting Service (NHFS-VITUKI) or directly. Generation of hydrological warnings is the primary responsibility of district water authorities however any agency (NHFS etc.) receiving information indicating the necessity of flood warning or flood alert should act with no time delay.

Regular (daily) hydrological forecast for River Tisza and main tributaries (46 gauging stations) are issued by NHFS-VITUKI. The conceptual modularly structured GAPI/TAPI modelling system is in use containing rainfall- runoff (with snow accumulation and ablation, soil frost sub-modules); channel routing; statistical updating; and simplified hydraulic - backwater modules. Forecasting of flood crests is the responsibility of the agency named by Rules of Hydrometeorological Activity during floods - VKKI Directive. As a principle the territorially competent water authority is named as responsible. Results of European Flood Alert System (EFAS) are also incorporated into the daily operation of the NHFS-VITUKI.

Republic Hydrometeorological Service of **Serbia** is charged to monitor, measure, collect and analyze hydrologic and meteorological data. The Service is also providing relevant information and forecast from domestic and foreign territories to all the flood defence 5 participants. Data are collected on 8 gauges on the Serbian part of the Tisa river basin, as well from 25 foreign gauges (Hungary and Romania).

2.1.5. Recent awareness of flooding

In **Ukraine** the severity, frequency and economic impact of flood events have shown an increasing trend since the late 1960s. Thus, very large floods have occurred in May 1970, December 1993, November 1998 and the largest of all in March 2001. July 2008 flood was the largest, but not for the whole Tisza, but downstream Viseu (right side tributary of Tisza in Romania).

Due to the high torrential degree of watercourses, to the climatic conditions, physical and geographical factors flooding on **Romanian** territory is a frequent phenomenon.

In the last years the occurrence of flooding was higher. In 2005, 2006 and 2008, dangerous, atypical hydrological and meteorological phenomena took place with human lives and huge material losses.

In 2005 the total value of material damages, due to the flooding in Timiș, Olt, Siret and Ialomița hydrographical basins was app. 1.66 bn. EURO, representing 0.6% of national GDP. The registered high-flood on Romanian sector of the Danube in April 2006 was the highest since 1898. The consequences were that dikes failed on many sectors. In July 2008, historical values of water discharge and levels have been registered in Tisa, Siret and Prut basins.

Large historical floods in the **Slovak** part of the Tisa river basins occurred in 1646, 1772, 1813, 1816, 1817 and 1888. Flood at the level of approximately Q_{100} affected territory in 1924. Significant floods in the second half of the XXth century, after realization of complex flood protection, drainage and river training works date back to 1967, 1974, 1979, 1980, 1989 and 1992. According to the reports of the SWME, the most recent period was evaluated, too. It covers incomplete twelve years (1997-2008), twice as long period as the six years period specified for the reviewing and updating of the preliminary flood risk assessment by the Directive 2000/60/EC of European Parliament and Council on the assessment and management of flood risks. It reports 19 flooding events, of them 5 flash floods, 8 caused by intensive rainfall, 4 combined snowmelt and rainfall and 2 ice jam flooding. The most severe one was the July 1998 Hornád River flood with more than 50 casualties, more than 60 municipalities heavily affected

On the territory of **Hungary** the greatest floods registered over the past one-hundred years, the one in 1879 was a spring flood the other in 1888 was fed by winter precipitation the one 1895 was caused by the melting snow cover, while that in 1919 originated from spring rainfall. The 1932 flood, caused by the flood discharge of the tributary Maros, was backed up to especially high levels along the Middle- and the Lower Tisza. Coinciding and superimposing disastrous floods on the main stream and all tributaries in 1970 resulted in the highest water levels among the spring floods. The ice-jam flood of 1985 on the Upper Tisza reach was unique among the Tisza floods on record.

Following a relatively dry decade, a succession of abnormal floods have set annually new record water levels on several gauges over the last four years. Over a hardly 28 months long period between November 1998, and March 2001, four flood waves have travelled down the Tisza River. Large areas were inundated simultaneously by undrained runoff and flash floods of abnormal height on several minor streams.

Recently the 2006 flood created an unexpected situation when the flood discharge of the Tisza River was not particularly high but the simultaneous large flood of the Danube River backed up the Tisza creating critical situation along the Lower (Hungarian and Serbian) Tisza.

In XXth century, many major floods occurred on the **Serbian** part of the Tisa River (1919, 1924, 1932, 1940, 1944, 1947, 1965 and 1970), but the protection system endured. The first

important flood after the major reconstruction of the levees was in 2000, also without any consequences. The most recent flood on the Tisa River occurred in 2006, almost simultaneously with the Danube flood. Water levels on the most downstream section of the Tisa River were very high, due to the influence of the Danube backwater. The flood protection unit, citizens and the Army made extreme efforts to prevent overtopping of the right levee, and levee breaching on a few week points.

2.2. Review and assessment of the predictable long term developments

At present there is no flood action plan, covering the territory of **Ukraine** as well as no one joint legislative act concerning flood issues. Nevertheless, there are several national programs, including:

- Complex Flood Protection Program in the Tisza river basin in Zakarpattia oblast on 2002-2006 and forecast until 2015 (2001)
- National Program on Dnipro Basin Environmental Rehabilitation (1997)
- Complex program of prevention of hazardous impact of floods on agriculture and rural settlements (2000)
- State program of impoundment prevention and management in Ukraine (2004).

In 1998 and 2001 catastrophic floods occurred in Zakarpattia and done significant damage to property and people.

As a response, the State Water Committee developed “*Complex Flood Protection Scheme in the Tisza river basin in Zakarpattia*”. It also developed the corresponding “*Complex Flood Protection Program in the Tisza river basin in Zakarpattia oblast on 2002-2006 and forecast until 2015*” to realize flood protection measures provided by the Scheme. This Program was revised in 2005 and is planned for the period 2006-2015.

The basic approaches used in the Program include:

- Construction of new flood protection structures, mainly accumulative dry polders and dry flood protection reservoirs in upper part of Tisza;
- Reconstruction of existing hydrotechnical structures and their maintenance;
- Construction and reconstruction of railway and road bridges, retaining walls and other railway engineering structures, crossings and culverts on the roads and railway;
- Prohibition to build houses and industrial objects in the flood prone zones;
- Improvement of the qualitative and quantitative monitoring of water resources;
- Introduction of environmentally safe technologies in water management, agriculture and forestry following requirements of Water, Agriculture and Forest Codes of Ukraine and other legal regulation.

Taking into account the significance of the Program, it has some drawbacks:

- It focuses mainly on construction measures,
- It does not reflect climate change
- It does not fully fit with requirements of EU Flood Directive 2007, although it reflects some of them (development of flood hazard and flood risk maps).

During the first years of the Program's implementation it was under-financed, but last three years (2006-2008) it was financed according to its budget. Taking into account economic crisis, happened from the autumn 2008, it is easy to foresee that in 2009 minimum the Program will be not be financed fully.

The National Plan for Prevention and Flood Protection is part of the **Romanian** national politics and constitutes a necessary tool for national coordination and basin correlation of investments in water management domain. The **National Strategy for Flood Risk Management** on short term adopted in December 2005 takes into consideration the following aspects and priorities:

- preliminary estimation;
- critical analysis of existing flood defences;
- basic principles for national strategy for flood risk management on medium and long term;
- risk reduction means both vulnerability and objective factors mitigation;
- both structural and non-structural measures are necessary;
- we should take into consideration all local and regional conditions;
- European context: directives, funds.

The existing legislative framework offer to the central authorities and public local administration the legal support for the prevention, protection and preparation activities in flood risk management (Regulations regarding flood adopted in 2005)

In Hungary the sequence of improvement of flood risk management along the remaining flood basins has been determined with the following principles and considerations in mind:

- The specified crest elevation and cross-sectional dimensions of the levees,
- The structural properties of the embankments,
- The phenomena observed during flood exposure and the assessment thereof,
- The population and the number of communities protected,
- The magnitude of the potential losses, and
- The possibilities of flood confinement.

Following extensive studies, the Ministry of Transport and Water has submitted eventually – as the first stage – a proposal for the improvement of embankments of 740 km total length, which the Government has approved by the Order No. 2003/2002 (I.11) with an implementation period of 5 years.

During the 1998 to 2000 period four abnormal flood waves have passed down the River Tisza. The total costs of flood fighting, emergency measures and reconstruction have amounted to some HUF 120 billion (thousand million). Both public awareness of the hazard potential and the demand for a higher level of safety have grown in the wake thereof.

The government, at its special meeting on the 26th of February, 2003, at Szolnok, had approved of the conceptual plan of enhancing flood safety in the Tisza Valley. The development proposal – also known as the “Renewal of Vásárhelyi Plan” - comprises a complex program, which covers beyond the creation of a higher level of flood safety, the improvement of the living standards of the rural- and urban population in the region, the formulation and introduction of new types of agro-ecological land use in the area of the emergency flood retention reservoirs and the modernisation of the infrastructure in the settlements along the River Tisza.

In Stage I, which covers the years 2004 to 2007, the proposed flood safety enhancement measures include the restoration of the flow conveying capacity of the flood bed, the conservation oriented revitalisation thereof along the Tivadar section of the river, as well as along that between Szolnok town and the southern national boundary. Work will also be started on the emergency retention reservoirs, of which six are contemplated at strategic sites.

Agreement has been reached on the principles according to which

- the reservoir sites are selected and their area secured,
- the compensation to the farmers is awarded when they make available their fields temporarily for the purpose of flood storage, and
- the methods of subsequent farming are decided upon.

The costs of the first four years have been estimated at HUF 130 billion, one-half thereof devoted to flood control measures, the other to rural development, agro-ecological farming and infrastructure modernisation projects.

Parallel to the implementation of the Stage I of the program, the scientific and professional foundations of the subsequent Stage II was prepared by the middle of 2005.

After joining the European Union in May 2004 the programme had to be redesigned to match the new financing instruments of the EU. This new programme includes

- strengthening of the existing dykes to meet the present design standard (1:100 year flood with 1 m freeboard)
- restoring the flood conveyance capacity of the flood way by opening a 300-600 m wide “hydraulic corridor” (an area with less hydraulic resistance)
- relocating dykes to remove bottlenecks and
- building flood retention reservoirs to provide extra safety against flood larger than the design flood.

Today two of the first six flood retention reservoirs (Cigánd and Tiszaroff Flood Retention Reservoirs) and the dyke relocation at Rákóczifalva have been completed.

The regime of Tisa floods is determined upstream of **Serbian** territory. Therefore, the most significant impacts on safety of flood defence system along the Tisa River in Serbia are:

- ***Trend of flood level increase*** (due to natural or anthropogenic factors). Under the influence of new structures or works in the Tisa River basin, characteristics of design flood could be changed, lessening the level of flood protection on Serbian territory.
- ***Ill-timed coincidence*** of flood waves on the Tisa River (HU) and the Moris River (RO) due to the interventions upstream.
- ***Climate change.***

After the 2006 flood on the Tisza River the reconstruction of right-bank levees along the Tisa has been started. The reconstruction of the most downstream 15 km long section is almost finished, and only 3 km are planned for 2009.

Further to the structural measure mentioned above non-structural measures are planned too:

- The RS-HU and RS-RO bilateral commissions are planning measures to prevent/limit flood hazards, and to eliminate/reduce the consequences.
- The project between the Swedish Rescue Services Agency (SRSA) and the Serbian Directorate for Water: “Development of a first draft Flood Risk Management Plan for Tamnava River Basin, Serbia”. Through the implementation of the Flood Directive, this project will strengthen the capacity of the Serbian institutions in charge of flood defence. Insight in project results and their practical implementation will broaden other stakeholders’ knowledge related to flood risk.
- EU funded project “Preparation of a Water Management Information System for the Republic of Serbia” (WMIS - EuropeAid/121208/D/SV/YU - Project N° 05SER01/05/004) is presently in a final phase. This project will provide efficient tools for managing the information and data and support water management activities on a country-wide basis.

3. TARGET SETTINGS

Ukraine set the targets for Tisza basin flood protection in the “Complex Flood Protection Program in the Tisza river basin in Zakarpattia oblast on 2002-2006 and forecast until 2015” as follows:

- To create safe conditions for human settlements and industry operation in Upper Tisza;
- To improve hydrological regime of rivers and ponds;
- To ensure surface water run-off regulation in order to optimize water discharge during flood events;
- To provide effective spatial use of agricultural lands, cities and other settlements;
- To minimize possible losses from floods.

This Program was revised in 2005 and is planned for the period 2006-2015 (See Table below).

3. Table Main directions of the Ukrainian Program implementation

Stages	Years	Actions
--------	-------	---------

1	2006-2015	identification of flood zones of different probability based on modern technologies of hydrological investigations, geodesic and mathematical calculations; reconstruction and construction of the new dikes river bank enforcement riverbed training and other actions
2	2006-2015	construction of accumulative dry polders in the plain part of the region;
3	2008-2015	construction of dry flood protection reservoirs in the mountainous part of the region.

The Romanian Action Plan for flood protection on medium-term (2009-2012) launched and comprises new hydraulic structures in frequently affected zones, higher safety degree of existing works and finalization of ongoing ones. The Action Plan foresees 1850 km River regulation 976 km of dikes, 810 km Riverbank consolidation, finalization of two wetlands in Crişul Negru hydrographic basin and identification of new zones as wetlands and DESWAT and WATMAN Projects finalisation.

The prioritisation criteria for promoting investments for flood protection have been made following:

- Inclusion of the proposed works in the Strategy of Ministry of Environment;
- Actual safety degree of the flood protection structures;
- Amplitude of avoided damages as result of the projects;
- The elaboration status of technical and economic documents;
- Financing possibility
- Occupied field status.

The **Slovakian** measures for mitigating of adverse impacts of floods for human life and health, the environment, economic activities, cultural and historical heritage result from the sources of menace and conditions in the given endangered localities. It is impossible to find universal solutions and measures valid everywhere, because they have to respect at least:

- Sources and courses of floods;
- Nature of runoff conditions in the individual watersheds;
- Natural conditions in endangered territories;
- Charges of the flood protection measures and their comparison to the value of protected properties.

The “Renewal of Vásárhelyi Plan” in **Hungary** defines the following targets:

- Provide protection against 1:100 year floods for the floodplains of the Tisza River by
 - = strengthening the existing dykes to withstand the design flood and
 - = restoring the former conveyance capacity of the flood bed,
- Reduce the level of 1:1000 year flood by about 1 m by
 - = giving “more room to river” (construction of regulated dry flood retention reservoirs),
- Provide opportunities to nature development and land use change by
 - = creating (restoring) wetlands

- = providing “irrigation” water on the polders during smaller floods,
- = creating technical background for better water management on the polders by construction of water distribution system.

Implementing criteria from the Water Management Master Plan of the Republic of **Serbia**, and taking into account the actual flood protection conditions and problems (especially the size of flood prone areas and possible damages) the long term flood protection strategy in the Tisa River basin in Serbia will comprise of:

- The existing layout of flood protection structures remains the same, while the following is planned:
 - = - Regular maintenance of the flood protection structures, according to criteria, standards and norms;
 - = - Reconstruction or/and construction of the flood protection structures to decrease flood hazard.
- Gradual and broad implementation of non-structural flood protection measures (as upgrade of the flood forecasting and warning procedures; introduction of flood maps into spatial plans, etc.).
- International cooperation in flood management on rivers which cross the state borders with Hungary and Romania.

3.1. Regulation of land use and spatial planning

All five countries consider land use and spatial planning as a crucial point in flood risk management. Flood risk mapping is on top of the agenda. The flood risk maps are than have to be reflected in the spatial planning and construction licences. Limitations on regularly or potentially flooded regions are to be set.

The following section shows the individual targets set by the countries. Although there are similarities the original text written by each country is retained to better reflect the actions in the next Chapter.

3.1.1. Targets set by Ukraine

Regulations on land use and spatial planning include the following directions:

- establishment of protective strips along the banks of watercourses as required by Water Code (Art. 88) and the Land Code (Chapter 13);
- resettlement of people from flood prone zones, which cannot be protected by technical flood defenses;
- prohibition to construct houses and industrial sites in flood prone zones;
- renaturalization of lands by means of reconnection of former floodplain;
- development of flood hazard and flood risk maps, as required by EU Flood Directive;
- introduction of environmentally friendly technologies of water and land use;
- further development of amelioration channel work.

3.1.2. Targets set by Romania

The existing local urban plans for development should contain maps with actually flooded areas, based on historic and studies data. These maps are from the Local Flood Protection Plans and are updated every 4 years.

3.1.3. Targets set by Slovakia

- Landscape development plans and spatial plans contain and respect flood hazard maps and flood risk maps.
- Limitations related to land use in flood prone areas are defined.

3.1.4. Targets set by Hungary

- Transposition of the EU Floods Directive into the Hungarian Water Act
- Preparation of flood risk maps
- Preparation of flood risk management plans

3.1.5. Targets set by Serbia

- Spatial plans of municipalities contain flood hazard maps (both for potentially and actually flooded areas) and flood risk maps.
- Limitations related to land use in flood prone areas are defined.

3.2. Reactivation of former, or creation of new, retention capacities

To reduce runoff each country in the Tisza Basin considers some kind of actions to hold the water on their territory for a longer time than present. Wetlands, dry reservoirs and polders are the tools in consideration. The complex utilisation of reservoirs (energy production, irrigation, flood risk management etc.) is a less preferred solution though some nature development, wetland construction and water management options in the polders make the picture more divers.

3.2.1. Targets set by Ukraine

- Reactivation of former floodplain by construction of polders in plain part of Tisza river basin;
- Creation of retention capacity by construction of dry flood protection reservoirs in the mountainous part of the river basin.

3.2.2. Targets set by Romania

No special plans are approved at the moment.

3.2.3. Targets set by Slovakia

- Water in every sub-basin is detained as long as possible - realization of non-structural measures within whole sub-basins in the forested and agricultural lands either.
- Provision of suitable tools for the retention of the water - water management reservoirs and polders.

- Provision of adequate space for flood waves routing in settled areas especially.

3.2.4. Targets set by Hungary

- Reactivation of former retention capacities by building flood retention reservoirs along the Tisza River;
- Maintenance of existing retention capacities along the tributaries of Tisza River.

3.2.5. Targets set by Serbia

- Retention capacities along the Tisa are re-considered.

3.3. Structural flood defences

There is a fairly large flood protection infrastructure in the Tisza Basin. The construction of it has started almost 200 years ago. The maintenance and the reconstruction of it is high on the agenda of the Tisza Basin countries. New protective structures are also considered mainly in the upper parts of the Basin. Erosion control is also a topic of the mountainous regions.

3.3.1. Targets set by Ukraine

Traditionally technical flood defenses planned by the Program include continuation of:

- reconstruction and construction of the new dikes
- river bank enforcement
- riverbed training
- construction of dams.

Besides it is envisaged to reconstruct railway and auto transport bridges, erosion prevention actions.

3.3.2. Targets set by Romania

The Action Plan (2009-2012) foresees 1850 km river regulation 976 km of dikes, 810 km riverbank consolidation (for the whole Romanian territory including the Tisza Basin as well). Feasibility studies have been prepared for all investments works.

3.3.3. Targets set by Slovakia

The targets in the field of structural flood protections measures can be defined as follows:

- Maintenance of existing retention volumes (removal of sediments) in reservoirs and polders.
- Design and construction of reservoirs with flood retention volume and polders.
- River training works in urban areas and rural municipalities.
- Reconstruction of the trained stretches in the towns and villages in order to achieve sufficient discharge capacity.
- Removal of obstacles in the channels, like bridges of insufficient flow capacity, improperly designed culverts and other barriers.
- Realization of ordinary maintenance in trained river stretches.

- Design and construction of measures to decrease erosion and to increase water retention in the river basins (trenches, ditches, canals, etc.)
- Torrents regulation in the mountainous areas.

3.3.4. Targets set by Hungary

- Improvement of present flood protection structures to meet the existing safety standards
- Removing bottlenecks

3.3.5. Targets set by Serbia

- Provide protection for the adopted design 100-year flood along the Tisa River. This is an adequate criterion for the protection of the Tisa riparian lands, considering the size of the potentially endangered areas, number of inhabitants and infrastructure value.
- Provide permanent preparedness of the flood defence system.

3.4. Non-structural measures (preventive actions, capacity building of professionals, raising awareness and preparedness of general public)

The non-structural measures are effective tools to reduce flood risk. The Tisza Basin countries use this tool to complement the structural interventions.

3.4.1. Targets set by Ukraine

Prevention actions are aimed at improvement of the level of knowledge about flood events, their prognosis and regulations in complex Carpathian ecosystem in conditions of climate change. The following measures are envisaged here:

- Fundamental and applied researches of floods, torrents, erosion and other events, human impact at their development, preventative actions to be taken and adaptation measures;
- Scientific grounding of flood protection actions at regional and local levels;
- Use of the best available techniques for modeling, construction and maintenance of flood protection structures taking into account national and international experience;
- Development of methodology of riverbed regulation in Carpathians;
- Development of new models of banks enforcement and dikes;
- Scientific grounding of dry flood protection reservoirs and dry polders.

It also includes the measures related to:

- Improvement of monitoring networks and establishment of integrated environmental assessment
- Further metrological and hydrological researches;
- Establishment of databases based on GIS and space images;
- Improvement of weather forecast, water level and flood prone zones modeling, and further improvement of early warning system, namely AIMS TISZA II.

- identification of flood zones of different probability based on modern technologies of hydrological investigations, geodesic and mathematical calculations, which goes in line with EU Flood Directive.

Capacity building of professionals includes the following actions:

- proficiency courses for water management specialists, including intercalibration exercises;
- further improvement of co-ordination between different authorities in case of floods;
- improvement of technical capacities of the professionals, namely hardware and software purchasing.

Raising awareness and preparedness of the general public include:

- Dissemination of the information concerning actions during the floods among population in flood prone zones;
- Publications of informational materials;
- Development of Internet based real time sources;
- Development of storage places for goods and equipment.

3.4.2. Targets set by Romania

These actions are concentrated towards prevention/mitigation of potential damages generated by floods through:

- avoiding houses, social and cultural or/and economic objectives constructions in potentially flooded area;
- realisation of structural and non-structural measures for protection;
- geographical delimitation of natural flood risk zones and noting these in the general urban planning studies;
- modern forecast, warning and alarming systems implementation in case of floods;
- existing infrastructure for flood protection and Riverbed maintenance;
- effective communication and people education regarding flood risk and the action ways in emergency situations.
- financial insurance for flood risk (On 1 January 2010, a law referring to the obligatory insurance for houses against natural disasters such earthquakes, landslides and flooding will come into force).

Raising awareness and preparedness of general public:

- Improvement reaction capacity, response and intervention;
- Information and awareness of the population regarding floods and its effects;
- Eco-centres setting-up in frequently affected zones;
- Public meeting presenting the local flood protection plans and the warning procedures based on colours code;
- Exercises for flood simulation at basin and county level with the participation of population.

Capacity building of professionals:

- An intensive programme for raising personnel capacity of the water management units of Romanian Waters responsible for the maintenance and operation of flood defences has been planned.

- A training action of new elected mayors and public local administration is being developed.

3.4.3. Targets set by Slovakia

Non-structural measures play important role in the flood risk assessment and management. Targets in this field can be specified as follows:

- Reduce flood risk
- Introduce principles of EU flood directive
- Build capacity of professionals and institutions responsible for flood management
- Upgrade flood monitoring, forecasting and warning services
- Introduce regulations for emergency situations response
- Prepare flood risk management plans
- Improve awareness of stakeholders on floods
- Update/build scientific base for flood management
- Improve international cooperation in flood management
- Improve information system on floods and flood risk management accessible to public

3.4.4. Targets set by Hungary

- Improvement of flood forecasting system
- Improvement of flood warning system
- Capacity building of professional staff
- Increase PR activity to raise awareness of general public

3.4.5. Targets set by Serbia

The non-structural measures (encompassing institutional, preventive, corrective and other measures) should be given an appropriate role in flood control and mitigation. Main activities should be tied to:

- • Preventive and operative tasks (setting up or improving the data base on natural events and protection system characteristics, modification of the existing plans for flood coping practices, adoption of reservoir operational rules, development/improvement of flood forecast and warning system);
- • Regulative and institutional measures (zoning of floodplains, floodplain management policy, construction standards etc.);
- • Managerial and technical education, as well as public awareness building.

All these tasks will be tied together within the Flood risk management plan for the Tisa River basin.

- Reduce flood risk
- Introduce principles of EU flood directive
- Build capacity of professionals and institutions responsible for flood management
- Upgrade flood monitoring, forecast and warning

- Introduce regulations for emergency situations response (natural disasters)
- Prepare Flood risk management plan
- Improve awareness of stakeholders on floods
- Update/build scientific base for flood management
- Improve international cooperation in flood management

3.5. Prevention and Mitigation of Water Pollution Due to Floods

Water pollution due to flooding is considered a threat to nature in two of the five countries.

3.5.1. Targets set by Ukraine

Prevention and Mitigation of Water Pollution actions include:

- Inventory of industrial and agricultural objects on flood prone zones with potential impact of water quality
- Development of pollution prevention plan for industrial sites
- Water quality control in surface water bodies.

Prevention and Mitigation of Water Pollution actions include:

- Inventory of industrial and agricultural objects on flood prone zones with potential impact of water quality
- Development of pollution prevention plan for industrial sites
- Water quality control in surface water bodies.

3.5.2. Targets set by Romania

Characteristic pollutions of the mountainous rivers are heavy metals, especially in Săsar, Crișul Negru, Crișul Alb and Arieș River basins, where there are important mining perimeters with rocks which reach the surface and which are washed by the precipitation. Another significant pressure is represented by the suspended solid loads caused by coal mining activities, especially on Jiu River.

- The Law 466 (regarding dam safety) covers the safety problems of dams and dikes of the mining waste deposits. Now, according to the EU Directive 1999/31/CE and Governmental Decision 349 from 2005 the major part of the mining ponds with high risk stopped the activity. The actual legislation foresees the continuous monitoring of the closed ponds.

4. MEASURES TO ACHIEVE TARGETS

4.1. Regulation on land use and spatial planning

Targets	Measures	Type of intervention	Institution in charge	Costs (k€)	Deadline	Comment
Ukraine						
1	Reconstruction of roads	reconstruction	State Committee of Water Management of Ukraine, Zakarpattia Water Management Board	26 100	2015	
2	Actions to prevent land erosion: <ul style="list-style-type: none">- Amelioration (sediment retention volumes and reforestration)- Hydrotechnical (earth mounds, backfilling of ravines, embankment walls and construction of terraces on the hills)- Agrotechnical (recultivation)	Construction / reconstruction		7 540	2015	
3	Actions to prevent mud flow	Construction / reconstruction		3 580	2015	
Romania						
1	Implementation of the medium- and long-term flood risk management strategy <ul style="list-style-type: none">- Land-use control- Relocation, land purchasing & cultural changes	Technical/ Administrative	Ministry of Environment, Ministry of Agriculture, Ministry of Administration and Interior, Romanian Waters		2020	
2	Including the results of the study “Identification and delimitation of the natural hazards (earthquakes, landslides and floods). Hazards maps at county level” into local and regional developing plans	Administrative	Public Administration	120	2009	

Targets	Measures	Type of intervention	Institution in charge	Costs (k€)	Deadline	Comment
3	Including the maps from Local Flood Protection Plan (Contingency Plans) into the Urban Development Plans	Administrative	Public Administration	20/year	continuous	This actions include flood risk evaluation (flooded areas maps and estimation of damages)
Slovakia						
1	Transposition of EU Directive 2007/60/EC on the assessment and management of flood risks to the Slovak national Flood Protection Act	Legal	MoE SR			
2	Implementation of the Slovak national Flood Protection Act (i.e. also EU Directive 2007/60/EC on the assess-ment and management of flood risks)	Admin/Technical	MoE SR, SWME, SHMI, municipalities			
3	Introduction of flood maps into spatial plans of regions, districts, municipalities	Administrative	MoE SR, SWME, SHMI,EPDO, municipalities			
4	Application of Land use limitations introduced in spatial plans	Technical	EPDO, municipalities		continuous	
Hungary						
1	Modify the text of the Water Act to incorporate the aim of the EU Floods Directive	Administrative	VKKI, KvVM		2009	It is under way
2	Methodological development of flood hazard and risk mapping	Administrative	Consultants		2010	It is under way
	Data collection	Administrative	KÖVIZIGs		2011	Projects under preparation
	Flood hazard mapping	Administrative	KÖVIZIGs and Consultants		2013	
	Flood risk mapping	Administrative	KÖVIZIGs and Consultants		2013	
3	Preparation of flood risk management plans	Administrative	KÖVIZIGs		2015	
Serbia						
1	Defining water estate	Administrative	MAFWM-RDW, PWMV VV			
2	Introduction of flood maps into spatial plans of municipalities	Administrative	MESP			

Targets	Measures	Type of intervention	Institution in charge	Costs (k€)	Deadline	Comment
3	Preparation of instructions for limitations on land use	Administrative	MAFWM-RDW, MESP			
4	Land use limitations applied	Administrative	LRSB			

4.2. Reactivation of former, or creation of new, retention and detention capacities

Targets	Measures	Type of intervention	Institution in charge	Costs (k€)	Deadline	Comment
Ukraine						
1	Construction of 42 dry flood retention reservoirs in mountainous part of Tisza basin.	construction	State Committee of Water Management of Ukraine, Zakarpattya Water Management Board	163 840	2015	The total volume is 289 mln. m ³ . The main purpose is flattening of flood peaks
2	Construction of 24 polders on the floodplains.	construction		38 770	2013	The total volume of all 24 polders is 257 mln. m ³ , and average depth of polders is 1,5 m.
3	Reconstruction of 5 water reservoirs	Re-construction		2 150	2015	From year 2011, the total volume 23,7 mln m ³ .
Romania						
	No plan approved as yet.					
Slovakia						
1	Tighten the rules applied during giving permission for activities within whole sub-basin	Administrative/legal	MoE SR, SWME, EPDO, municipalities		continuous	
2	Integration of Ecosystem Management Principles and Practices into Land and Water Management of Laborec-Uh region (Eastern Slovakian Lowlands)	Admin/Technical	SWME		Ongoing, 2010	
3	Design and building of new polders, retention reservoirs	Technical	SWME, SHMI, municipalities			

Targets	Measures	Type of intervention	Institution in charge	Costs (k€)	Deadline	Comment
4	Reassessment of rivers retention and detention capacities	Technical	MoE SR, SWME		continuous	
5	Updating and implementation of results of the study “The survey of water courses in towns and villages (SWME)”.	Admin/Technical	SWME		continuous	
Hungary						
1	Creation of 11 flood retention reservoirs	Structural measure	KvVM, VKKI, KÖVIZIGs		~2030 in phases	Part of the New Vásárhelyi Plan
2	Modernisation of existing flood retention reservoirs	Structural measure	KvVM, VKKI, KÖVIZIGs		2012	Mályvád and Kisdelta reservoirs in Körös system
Serbia						
1	No measure has been decided upon yet	Scientific	MAFWM- RDW, PWMC VV			Retention capacities along the Tisa are re-considered

4.3. Structural flood defences

Targets	Measures	Type of intervention	Institution in charge	Costs (k€)	Deadline	Comment
Ukraine						
1	Reconstruction and construction of the new dikes	Reconstruction/ construction	State Committee of Water Management of Ukraine, Zakarpattya Water Management Board and village councils	66 960	2015	Total length 904 km
2	River bank enforcement	Construction		20 110	2015	Total length 118 km
3	River bank enforcement of small rivers and creeks	Construction		249	2015	Total length 1,6 km
4	Riverbed training	Construction		10 450	2015	Total length 179 km
5	Riverbed training of small rivers and creeks	Construction		4 450	2015	Total length 671 km
Romania						
1	Implementation of the medium- and long-term flood risk management strategy- Improvement & maintenance of defence structures	Technical Administrative	Ministry of Environment, Ministry of Agriculture, Ministry of Administration and Interior, Romanian Waters		2020	
2	Tarna Mare river control in Tarna Mare locality, Satu Mare county	Technical	Romanian Waters	0.739	2010	Hazard Risk Mitigation & Emergency Preparedness Project – World Bank

Targets	Measures	Type of intervention	Institution in charge	Costs (k€)	Deadline	Comment
3	Târnava Mică river regulation on Cetatea de Baltă-Blaj sector, Alba county	Technical	Romanian Waters	1.143	2010	Hazard Risk Mitigation & Emergency Preparedness Project – World Bank
4	Increase of safety degree for Berdu dam, Maramureş county	Technical	Romanian Waters	2.034	2010	Hazard Risk Mitigation & Emergency Preparedness Project – World Bank
5	Increase of safety degree for Vârşolţ dam, Sălaj county	Technical	Romanian Waters	10.832	2010	Hazard Risk Mitigation & Emergency Preparedness Project – World Bank
6	Increase of safety degree for Leşu dam, Bihor county	Technical	Romanian Waters	3.785	2010	Hazard Risk Mitigation & Emergency Preparedness Project – World Bank
7	Increase of safety degree for Valea de Peşti dam, Hunedoara county	Technical	Romanian Waters	3.460	2010	Hazard Risk Mitigation & Emergency Preparedness Project – World Bank
8	Bega river and tributaries control on Balint-Bethausen sector, Timiş county	Technical	Romanian Waters	2.397	2010	Hazard Risk Mitigation & Emergency Preparedness Project – World Bank
9	Increase of safety degree of Hydraulical Knot Sânmihaiul Român, Timiş county	Tehnică	Romanian Waters	4.749	2010	Hazard Risk Mitigation & Emergency Preparedness Project – World Bank
10	Runcu reservoir, Maramureş county	Technical	Romanian Waters	82.7	2012	External funds
11	Embankments and river bank consolidations on Tisa river, Maramureş county	Technical	Romanian Waters	18.53	2010	External funds
12	Someşul Mare river and tributaries control on Valea Mare-Leleşti sector, Bistriţa-Năsăud county	Technical	Romanian Waters	2.13	2008	External funds
13	Valea Lechincioara and Valea Bârloagelor river control , Satu Mare county	Technical	Romanian Waters	2.62	2008	External funds
14	Valea Seinel river control in Seini locality, Maramureş county	Technical	Romanian Waters	4.65	2010	External funds
15	Valea Olpret river control in Dej town, Cluj county	Technical	Romanian Waters	1.53	2009	External funds
16	Valea Ocnei river control in Dej town, Cluj county	Technical	Romanian Waters	0.76	2009	External funds

Targets	Measures	Type of intervention	Institution in charge	Costs (k€)	Deadline	Comment
17	Lăpuș river control in Băiuț, Tg. Lăpuș, Remetea Chioarului and Lăpușel, Maramureș county	Tehnică	Romanian Waters	7.52	2010	External funds
18	Valea Băița river control in Tăuții Măghereș locality, Maramureș county	Tehnică	Romanian Waters	3.78	2010	External funds
19	Valea Răoaia riverbank protection in Tg. Lăpuș town, Maramureș county	Tehnică	Romanian Waters	0.31	2009	External funds
20	Suciu river regulation in Groșii Țibleșului locality, Maramureș county	Tehnică	Romanian Waters	0.95	2009	External funds
21	Upper Talna river flood defences and increase of existing works safety degree, Satu Mare county	Tehnică	Romanian Waters	1.04	2009	External funds
22	Upper Tur river control, Satu Mare county	Tehnică	Romanian Waters	2.57	2009	External funds
23	Valea Albă river control, Satu Mare county	Tehnică	Romanian Waters	2.21	2010	External funds
24	Valea Rea river control, Satu Mare county	Tehnică	Romanian Waters	3.13	2010	External funds
25	Valea Moneasa polder, Arad county	Technical	Romanian Waters	8.74	2009	External funds
26	Water works in Barcău h.b., Bihor and Sălaj county	Technical	Romanian Waters	47.89	2010	External funds
27	Ginta polder on Crișul Negru river, Bihor county	Technical	Romanian Waters	14.39	2010	External funds
28	Valea Crăiasa river control, Bihor county	Technical	Romanian Waters	3.19	2008	External funds
29	Valea Hotărel river control, Bihor county	Technical	Romanian Waters	1.42	2008	External funds
30	Poiana polder, Bihor county	Technical	Romanian Waters	2.50	2009	External funds
31	Left dike protection of Crișul Negru river against infiltration, Zerind-Iermata Neagră zone, Bihor county	Technical	Romanian Waters	2.95	2010	External funds
32	Valea Bistra river control, Bihor county	Technical	Romanian Waters	0.56	2009	External funds
33	Valea Borumblaca river control, Bihor county	Technical	Romanian Waters	2.35	2009	External funds
34	Valea Călata river control, Cluj county	Technical	Romanian Waters	9.11	2010	External funds
35	Corbești polder, Bihor county	Technical	Romanian Waters	3.21	2010	External funds
36	Arieș river control for flood protection of Câmpeni, Baia de Arieș and Lunca Arieșului localities and downstream Mihoiești reservoir, Alba county	Technical	Romanian Waters	8.55	2010	External funds

Targets	Measures	Type of intervention	Institution in charge	Costs (k€)	Deadline	Comment
37	Water works in Gurghiu h.b. on Reghin-Lăpușna sector, Mureș county	Technical	Romanian Waters	6.75	2010	External funds
38	Pian river regulation downstream Strungari locality, Alba county	Technical	Romanian Waters	1.97	2009	External funds
39	Regulation and riverbank protection of Orăștie river on Costești-Orăștie sector, Hunedoara county	Technical	Romanian Waters	3.03	2009	External funds
40	Mihoiești reservoir, Alba county	Technical	Romanian Waters	21.16	2010	External funds
41	Mureș river embankment at Saracsău, Alba county	Technical	Romanian Waters	0.74	2009	External funds
42	Valea Ciorii river control at Baia de Arieș, Alba county	Technical	Romanian Waters	1.30	2010	External funds
43	Ampoi river and torrents regulation at Zlatna, Alba county	Technical	Romanian Waters	0.19	2009	External funds
44	Valea Troaș regulation at Săvârșin, Arad county	Technical	Romanian Waters	0.46	2009	External funds
45	Valea Vinești regulation at Săvârșin, Arad county	Technical	Romanian Waters	0.25	2009	External funds
46	Valea Racilor river control in Turda town, Cluj county	Technical	Romanian Waters	1.88	2010	External funds
47	Water works on Goagiu river at Cristuru Secuiesc, Harghita county	Technical	Romanian Waters	0.16	2009	External funds
48	Left bank Mureș river consolidation in Aurel Vlaicu locality, Hunedoara county	Technical	Romanian Waters	0.39	2009	External funds
49	Bistra and Pietriș river regulation in Bistra Mureșului, Deda and Pietriș localities, Mureș county	Technical	Romanian Waters	2.03	2009	External funds
50	Water works on Mureș river at Brâncovenești, Mureș county	Technical	Romanian Waters	0.60	2009	External funds
51	Bega river and tributaries control on Leucușești-Curtea sector, Timiș county	Technical	Romanian Waters	19.03	2010	External funds
52	Bega river and tributaries on Curtea-Poieni sector, Timiș county	Technical	Romanian Waters	5.96	2010	National Budget & External funds
53	Consolidation and reshaping of Bega-Timiș canal on Topolovăț-Timiș river confluence sector, Timiș county	Technical	Romanian Waters	3.47	2009	National Budget & External funds

Targets	Measures	Type of intervention	Institution in charge	Costs (k€)	Deadline	Comment
54	224 objectives (polders, Riverbank regulations, dams)	Technical	Romanian Waters	2000	2013	9 dams, 4 polders, 211 regulations works
Slovakia						
1	Regular maintenance of dams, water courses and water structures, e.g.: - recovery of water courses vegetation protection - technical-farming activities at embankments and in river beds - maintenance of natural river beds - removal of obstacles from river beds - removal of sediments etc.	Technical	SWME, owners		continuous	
2	Systematic technical monitoring of key water structures	Technical	SWME, owners		continuous	
3	Polder Borša - reconstruction	Technical	SWME		2010	the Slovak National Flood Protection Plan
4	Tisa River, Veľké Trakany - right-side flood protection dike reconstruction	Technical	SWME, SHMI		2012	the Slovak National Flood Protection Plan
5	Ružín Water reservoir, Hornád River - technological equipment reconstruction	Technical	SWME			the Slovak National Flood Protection Plan
6	Hornád River, Košice - Vyšné Opátske water structure reconstruction	Technical	SWME, SHMI		2011	the Slovak National Flood Protection Plan
7	Torysa River and tributaries, Prešov – flood protection measures – river bed reconstruction	Technical	SWME, SHMI		2011	the Slovak National Flood Protection Plan
8	Hornád River, Košice - Flood protection of town residential area	Technical	SWME, SHMI		2014	the Slovak National Flood Protection Plan
9	Ondava River, km 12,500 – 17,800 left-side flood protection dike reconstruction	Technical	SWME, SHMI		2012	the Slovak National Flood Protection Plan
10	Ondava River, km 7,070 – 14,200 right-side flood protection dike reconstruction	Technical	SWME, SHMI		2012	the Slovak National Flood Protection Plan
11	Sobrancecký creek, Choňkovce - polder construction	Technical	SWME, SHMI			the Slovak National Flood Protection Plan

Targets	Measures	Type of intervention	Institution in charge	Costs (k€)	Deadline	Comment
12	Lutinka creek, Majdan – Východ - polder construction	Technical	SWME, SHMI			the Slovak National Flood Protection Plan
13	Horošov creek, Majdan – Sever - polder construction	Technical	SWME, SHMI			the Slovak National Flood Protection Plan
Hungary						
1	Strengthening and heightening flood protection dykes to resist the 1:100 year floods	Structural measure	KvVM, VKKI, KÖVIZIGs			Under way; Part of the New Vásárhelyi Plan
2	Improve flood conveyance capacity	Structural measure	KvVM, VKKI, KÖVIZIG			Part of the New Vásárhelyi Plan
3	Dyke relocations to give more room to Tisza River	Structural measure	KvVM, VKKI, KÖVIZIG			Part of the New Vásárhelyi Plan
Serbia						
1	Reconstruction of levees on the right bank of Tisa	Technical	PWMC VV		Started	
2	Maintenance of flood protection structures	Technical	MAFWM- RDW, PWMC VV, LRSG, OTHER		Continuous	According to specific standards and norms.
3	Maintenance of dam on Tisa and weirs on tributaries	Technical	MAFWM- RDW, PWMC VV		Continuous	According to specific standards and norms.
4	Purchase and repair of machinery, tools, materials, equipment and communications	Technical	MAFWM- RDW, PWMC VV		Continuous	According to specific standards and norms.
5	Rehabilitation of weak points at levees	Technical	PWMC VV		Continuous	

4.4. Non-structural measures

Targets	Measures	Type of intervention	Institution in charge	Costs (k€)	Deadline	Comment
Ukraine						
1	Flood risk mapping: - Topographic and geodesic survey - Hydrological assessment - Hydraulic calculations and inundation zones (1,5, 10% of probability)		State Committee of Water Management of Ukraine, Zakarpattya Water Management Board	187	2008	
2	Development of automatic hydrometeorological stations network (Tisza 2)			N/A	continuous	
3	Scientific studies, assessment, investigations			1 960	2015	
4	Design and research works			7 620	2015	
5	Proficiency courses for stuff			N/A	continuous	
6	Resettlement of the population from the flood prone zones			1 170	2011	
7	Media support in flood awareness raising (TV programs, web-sites, articles, publications)		NGOs, local administration	N/A	continuous	Different sources of financing, no exact budget
Romania						

Targets	Measures	Type of intervention	Institution in charge	Costs (k€)	Deadline	Comment
1	<p>Implementation of the medium- and long-term flood risk management strategy</p> <ul style="list-style-type: none"> – Elaboration & implementation of Flood Risk Management Plans – Forecasting, monitoring & warning – Emergency plan & management – Flood Risk Assessment – Run-off control – Improvement of flow conditions in river beds – Improvement of the flood defence capacity – Reduction of flood vulnerability of infrastructures and agriculture – Reduction of flood vulnerability of the environment – Social vulnerability to floods – Individual vulnerability mitigation – Funding & compensation – - International Cooperation 	Administrative Technical	Ministry of Environment Ministry of Agriculture Ministry of Administration and Interior Romanian Waters		2020	
2	DESWAT – Carrying of a hydrologic information-decisional system for the management of emergency situations (265 automatic stations)	Technical	Romanian Waters	45	2011	
3	WIMS – Investment supporting the information system and database for water management (PHARE project) at national level	Technical	Romanian Waters	2.4	2009	
4	Contributions to the development of the flood risk management strategy	Technical	Romanian Waters	1.7	2009	
5	Information system for integrated water management (WATMAN)	Technical	Romanian Waters	138.4	2015	

Targets	Measures	Type of intervention	Institution in charge	Costs (k€)	Deadline	Comment
6	Danube Floodrisk - flood risk reduction: risk assessment, risk mapping, involvement of stakeholders, risk reduction by adequate spatial planning.	Administrative Public	Romanian Waters	6.38	2012	
7	High-flood forecasting and flood management in Romania – feasibility study - the analysis for implementing of the decision support system	Administrative Technical	Romanian Waters	0.1	2009	
8	Update the Water Law	Administrative	Ministry of Environment			
9	Update the Flood Protection Plans at basin, county and local level	Administrative	Romanian Waters		Every 4 years	
10	Update the Plan for warning-alarming for downstream localities in case of accidents at dams	Administrative	Romanian Waters		Every 10 years	
Slovakia						
1	Implementation of the Slovak national Flood Protection Act (i.e. also EU Directive 2007/60/EC on the assessment and management of flood risks)	Admin/Technical	MoE SR, SWME, SHMI, EPDO, municipalities		continuous	
2	Regular updating and implementation of the Slovak National Flood Protection Plan	Administrative	MoE SR, SWME, SHMI		continuous	
3	Implementation of flood forecasting and early warning system POVAPSYS	Admin/Technical	MoE SR, SHMI		ongoing	
4	Introduce directive for emergency situations response	Legal	MoI SR + MoE SR,			
5	Bring into force bilateral agreements	Administrative	MoE SR		continuous	
6	Improvement and formalizing of international basin wide online flood related meteorological and hydrological data and operative flood defense information exchange	Admin/Technical	MoE SR, SHMI, SWME			

Targets	Measures	Type of intervention	Institution in charge	Costs (k€)	Deadline	Comment
7	Introduce and carry on the web sites focused on floods and flood risk management	Technical	MoE SR, SHMI, SWME		ongoing	
8	Support scientific base for flood management	Technical	MoE SR, WRI			
9	Organize vocational retraining for water professionals of SWME, SHMI, WRI, EPDO and municipalities that participate in flood protection	Technical	MoE SR, WRI			
Hungary						
1	Incorporate the newest monitoring data available (automatic station, ECMWWF etc.) and improve the algorithm	R&D	VKKI, VITUKI		Continuous	
2	Intensive use of EFAS	R&D	VITUKI		Continuous	Incorporate, test and use the outputs of EFAS into the daily forecasting models
3	Regular, yearly training of professional staff; improve vocational and post-graduate education to bring up new generation of staff	Training	KvVM, VKKI, KÖVIZIGs, Universities, High schools		Continuous	
4	Production and distribution of leaflets and other PR materials; paid programmes on broadcasting stations	PR	KvVM, VKKI		Continuous	
Serbia						
1	Implementation of operative flood defence measures	Technical/ Organizational	PWMC VV, LRSG		Continuous	
2	Preparation and adoption of new Water Law	Legal/ Administrative	Republic of Serbia, MAFWM-RDW		2009	
3	Preparation of bylaws according to new Water Law	Legal/ Administrative	MAFWM-RDW		2010	
4	Regular upgrade of General and Annual Flood Defence Plans for the Republic of Serbia	Administrative	MAFWM-RDW		Continuous	State level – increased efficiency of operative flood defence.
5	Preparation and regular upgrade of General and Annual Flood Defence Plans for municipalities	Administrative	LRSG		Continuous	Municipality level – increased efficiency of operative flood defence.
6	Characterisation of current situation	Technical	MAFWM-RDW, PWMC VV			

Targets	Measures	Type of intervention	Institution in charge	Costs (k€)	Deadline	Comment
7	Update/preparation of technical documentation for all existing flood protection structures (incl. data on water estate)	Technical	PWMC VV			
8	Update/preparation of flood defence manual	Technical	MAFWM-RDW		2010	
9	Preparation of bylaw for establishment and management of cadastre of water structures	Administrative	MAFWM-RDW		2009	
10	Preparation of cadastre of flood protection structures	Technical	PWMC VV, LRSG		Continuous	
11	Improvement of the system of automated weather and gauging stations	Technical/ Organizational	RHMSS, MAFWM-RDW		Continuous	Measured data available to relevant services in real time.
12	Improvement of the system of hydrological and weather forecasting	Technical/ Organizational	RHMSS, MAFWM-RDW		Continuous	Introduction of the latest technologies in forecasting. Forecasts available to relevant services through WMISS and by other IT.
13	Improvement of alarm systems and systems for issuing timely warning to population at risk	Technical/ Organizational	RHMSS, MAFWM-RDW		Continuous	
14	Preparation of strategic, tactical and operative disaster management plans for catastrophic flood	Technical/ Organizational	MAFWM-RDW, PWMC VV, MI, LRSG			-Criteria for declaration of an emergency; - Information routes; - Methods of public warning; - Evacuation routes; -Preparedness of public services.
15	Training exercises	Public participation	PWMC VV, LRSG, MI		Continuous	-Organizing operations of the police and fire fighting forces as during floods; - Organizing evacuation of population; - Organizing life (medical services, and emergency recovery).
16	Preliminary flood risk assessment	Scientific	MAFWM-RDW		2010	Activities started. Required harmonization with neighbouring countries.

Targets	Measures	Type of intervention	Institution in charge	Costs (k€)	Deadline	Comment
17	Preparation of methodology for flood risk mapping	Scientific/ Technical	MAFWM-RDW		2010	Standard hydrological and hydraulic models should be revised or new should be developed for computation of reference high water levels. Also, methodology for digital mapping should be developed according to standard specifications. The following results/conclusions will be used: - Common position on flood risk mapping (ICPDR); - Flood risk project; - Tamnava project (Swedish Rescue Service and MAFWM-RDW); - Common approach of Danube/Tisa countries.
18	Adoption of bylaw on methodology for flood risk mapping	Administrative	MAFWM-RDW		2011	
19	Preparation of flood hazard maps	Scientific/ Technical	MAFWM-RDW, PWMC VV		2013	
20	Preparation of flood risk maps	Scientific/ Technical	MAFWM-RDW, PWMC VV		2013	
21	Preparation of draft Flood risk management plan	Technical/ Organizational	MAFWM-RDW, PWMC VV		2014	Tisa countries will prepare an integrated plan or a plan coordinated on the level of the Tisa river basin. Support: Tamnava project (Swedish Rescue Service and MAFWM-RDW).
22	Public information and consultation on draft Flood risk management plan for the Tisa River basin in Serbia	Public participation	MAFWM-RDW, PWMC VV		2014-2015	Flood risk management plan and Flood risk maps should be discussed in public. The results, benefits and consequences of preparation of the flood risk maps as a legal act should be presented to a broad public.
23	Bring into force Flood risk management plan for the Tisa River basin in Serbia	Administrative	MAFWM-RDW		2015	

Targets	Measures	Type of intervention	Institution in charge	Costs (k€)	Deadline	Comment
24	Introduction of flood insurance	Administrative				
25	Introduction of water management issues into schools	Public participation			Continuous	From elementary school to university.
26	Preparation of flood leaflet, film, TV broadcasts etc.	Public participation				
27	Preparation of studies and design	Scientific	All		Continuous	
28	Bring into force bilateral agreement with HU and RO	Legal	Republic of Serbia		2010	
29	The Tisa River basin wide online flood related meteorological and hydrological data exchange	Administrative	Republic of Serbia + RHMS bilateral commissions		2010	Improvement and formal agreement.
30	The Tisa River basin wide on line operative flood defence information exchange	Administrative	Republic of Serbia + bilateral commissions		2010	Improvement and formal agreement.

Annex 1 - Abbreviations

Hungary

Name of institution	Abbreviation	Address
Ministry of Environment and Water	KvVM	Fő utca 44-50 Budapest, 1011
Central Directorate for Water and Environment	VKKI	Márvány u. 1/d Budapest, 1012
Environmental and Water Management Directorates	KÖVIZIGs	
Upper-Tisza Regional Environmental and Water Directorate	FETI-KÖVIZIG	Széchenyi u. 19. Nyíregyháza, 4400
Trans-Tisza Environmental and Water Directorate	TIKÖVIZIG	Hatvan u. 8-10. Debrecen, 4025
North Hungarian Environmental and Water Directorate	ÉKÖVIZIG	Vörösmarty u.77. Miskolc, 3501
Middle-Tisza District Environmental and Water Directorate	KÖTI-VIZIG	Ságvári krt.4. Szolnok, 5002
Lower Tisza Valley Environmental and Water Directorate	ATIKÖVIZIG	Stefánia 4. Szeged, 6720
VITUKI Environmental and Water management Research Institute Non.profit Ltd.	VITUKI	Kvassay J. út 1. Budapest, 1095

Serbia

Name of institution	Abbreviation	Address
Ministry of Agriculture, Forestry and Water Management – Republic Directorate for Water	MAFWM-RDW	Bulevar umetnosti 2a 11070 Novi Beograd
Ministry of Environment and Spatial Planning	MESP	Nemanjina 11 11000 Beograd
Public Water Management Company “Vode Vojvodine”	PWMC	Bulevar Mihajla Pupina 25 21000 Novi Sad
Republic Hydrometeorological Service of Serbia	RHMSS	Kneza Višeslava bb 11000 Beograd
Electric Power Industry of Serbia – the Iron Gate Company	EPS	Pop Stojanova 2a 11000 Beograd
Public Company “Vojvodinašume”	PCVŠ	Preradovićeve 2 21131 Petrovaradin
Ministry of the Interior	MI	Bulevar Mihajla Pupina 2 11070 Novi Beograd
Local and regional self-government units	LRSG	
Other water and land users	OTHER	