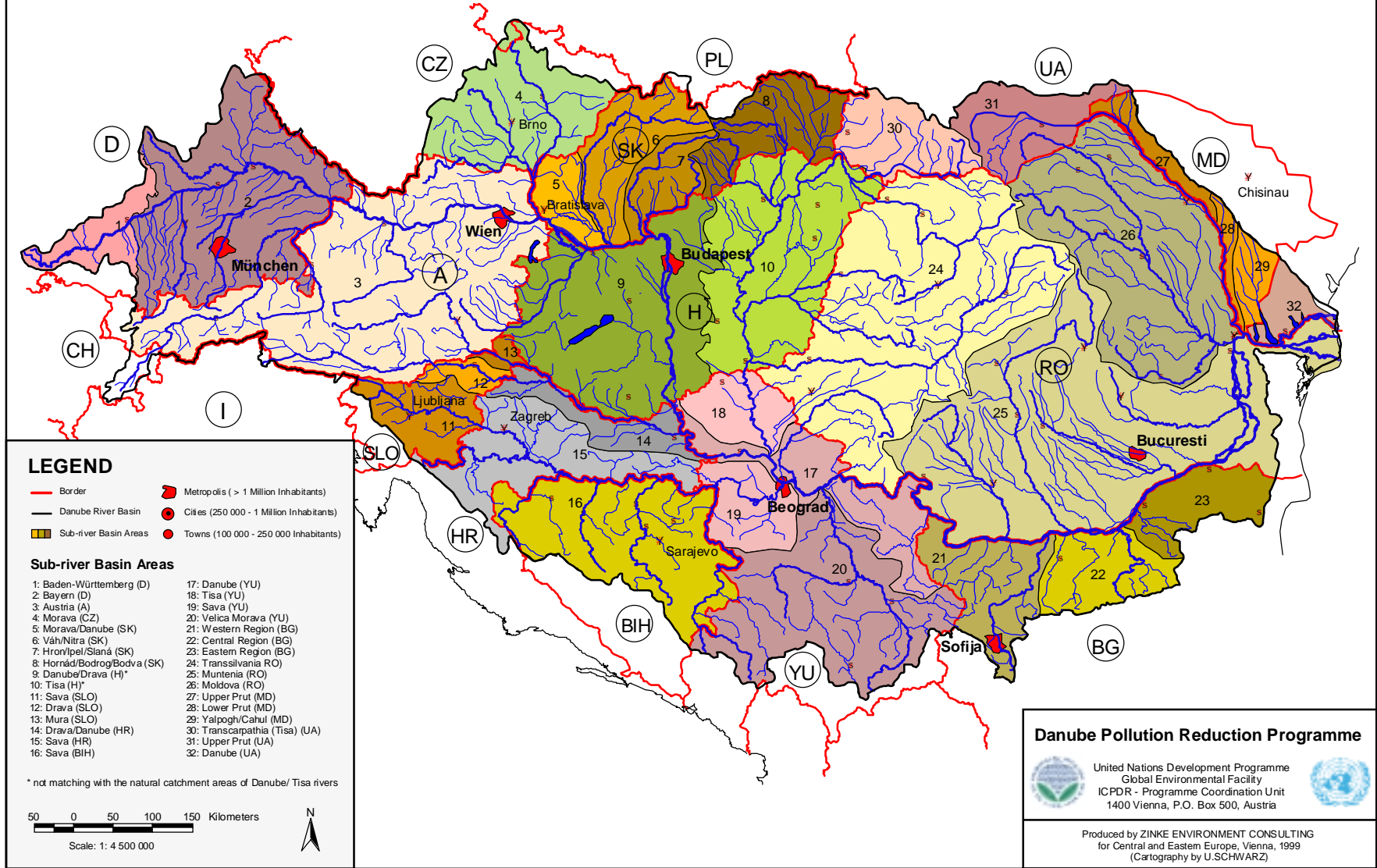


Map 3: Danube Sub-river Basin Areas

Based on National Planning Workshop Reports 1998



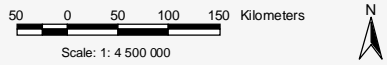
LEGEND

- Border
- Danube River Basin
- Sub-river Basin Areas
- Metropolis (> 1 Million Inhabitants)
- Cities (250 000 - 1 Million Inhabitants)
- Towns (100 000 - 250 000 Inhabitants)

Sub-river Basin Areas

- | | |
|-----------------------------|--------------------------------|
| 1: Baden-Württemberg (D) | 17: Danube (YU) |
| 2: Bayern (D) | 18: Tisa (YU) |
| 3: Austria (A) | 19: Sava (YU) |
| 4: Morava (CZ) | 20: Velica Morava (YU) |
| 5: Morava/Danube (SK) | 21: Western Region (BG) |
| 6: Váh/Nitra (SK) | 22: Central Region (BG) |
| 7: Hron/Ipaľ/Slaná (SK) | 23: Eastern Region (BG) |
| 8: Hornád/Bodrog/Bodva (SK) | 24: Transilvania (RO) |
| 9: Danube/Drava (H) | 25: Muntenia (RO) |
| 10: Tisa (H) | 26: Moldova (RO) |
| 11: Sava (SLO) | 27: Upper Prut (MD) |
| 12: Drava (SLO) | 28: Lower Prut (MD) |
| 13: Mura (SLO) | 29: Yalpoqh/Cahul (MD) |
| 14: Drava/Danube (HR) | 30: Transcarpathia (Tisa) (UA) |
| 15: Sava (HR) | 31: Upper Prut (UA) |
| 16: Sava (BIH) | 32: Danube (UA) |

* not matching with the natural catchment areas of Danube/ Tisa rivers



Danube Pollution Reduction Programme

United Nations Development Programme
 Global Environmental Facility
 ICPDR - Programme Coordination Unit
 1400 Vienna, P.O. Box 500, Austria

Produced by ZINKE ENVIRONMENT CONSULTING
 for Central and Eastern Europe, Vienna, 1999
 (Cartography by U.SCHWARZ)